

Brought to you by:



GRADUATE 101: A FULL GUIDE TO MASTER PROGRAMS

Curated by
Tommaso Magnani
Simone De Giorgi

2023-2024 Edition

Find out more at:
astrabocconi.it

This guide has no intention of substituting the material published by the University,
that has to be considered the only official source of news on this topic.

Questa guida non è concepita in sostituzione al material rilasciato dall'Università,
che è da considerarsi l'unica fonte ufficiale di notizie sull'argomento.

This guide is the result of a reworking of the official materials published by Bocconi University, which remain the only valid source of information to be consulted. The purpose of this guide is to make some passages more understandable and clarify any doubts. We refer, therefore, to the official materials in case of need.

TIPS ON HOW TO USE THIS GUIDE

- The data here reported are to be considered approximative as Bocconi doesn't publish the official scores, they are collected from an internal survey created by Astra, and sadly, just a few people are willing to fill their data in this survey.
- With the aim of providing you with the most useful material possible, and to be fully transparent, we indicated the number of observations for each box plots. Those observation are a few compared to the number of students enrolled in the courses, but they have been checked multiple times together with other data to ensure the accuracy of the data.
- We decided to publish also data about some master programs which won't be available anymore (for example CLELI), for you to have the most complete information possible. If the master is not available anymore, it will be indicated in the guide next to the course name.
- We calculated a minimum score for every master which, for sure, was not enough to be admitted in that master. Please don't take it literally, because it's calculated based on our survey and on a very limited number of answers (which is indicated for every course)
- Check every link to the study plan and choose wisely according to your passion and interests :)



GENERAL INFORMATION ABOUT THE APPLICATION

Bocconi students can only apply for the Master program in the two scheduled sessions. Therefore, it is not possible to apply, as for other types of applicants, through tests or by presenting equivalent certificates (ex. Gmat).

The application timelines for A.Y. 2025-2026 are as follows:

The time at which you submit your application will **not** affect the outcome, so those who submitted their applications, for example, on July 19 will not be favored over those who did so on October 9.

	I round	II round
Admission request	July 18th - October 10th 2024 (3 pm)	February 13th - April 29th 2025 (3 pm)
Results	November 21st 2024	May 29th 2025
Enrollment	November 21st - December 12th 2024	May 29th - June 10th 2025

Your application score will be calculated like this:

- Your GPA weighted and converted in a score out of 110. The GPA is to be considered based on all exams recorded in the booklet: for exams involving multiple modules, individual modules are considered separately and not the overall module, so the weighted average may differ slightly from that shown on You@B.
- 1 bonus point for Current Student Status (For more information click [here](#)).
- For each CFU exceeding the minimum to apply (ex. 90 for the first round), a bonus score of 0.05 point.

So, for example, if I am a student applying to the first round with an average of 26.00, having the requirements of "current student" and with 100 CFUs, I will have a score of:

- GPA converted: $26.00 * 110 / 30 = 95.33$
- 1 bonus point since I meet current student requirements
- $(\text{CFUs recorded in booklet} - 90 \text{ CFUs (minimum required in the first round)}) * 0.05 = (100 - 90) * 0.05 = 10 * 0.05 = 0.5$

My final application score will be: $95.33 + 1 + 0.5 = 96.83$

PLEASE NOTE: Any activities such as internships, language certifications, etc., will only be considered if registered by July 2024. Please check that everything has been registered correctly and contact the appropriate offices if necessary.

The ranking score will be constructed according to these criteria, and the allocation of available spots will be made by proceeding in descending order from the candidate with the highest score with the allocation to the first-choice degree course (until all available places are filled) or possibly to the second, third, fourth and fifth-choice degree course (again until all available places are filled).



The application must be submitted through the portal. A maximum of 5 courses may be indicated during the selection process. Selections for LSE-Bocconi and Sciences Po-Bocconi Double Degree take place according to dedicated procedures.

Students at the application stage **will not be required** to submit any language certification, as the requirement is automatically fulfilled through language instruction on the curriculum. Therefore, it will suffice to have a grade for English on the syllabus by October 2025, the deadline for graduation (it does not matter if you fulfill it by taking an internal exam, converting a language certification, etc.). EXCEPTION is made for IM CEMS MIM, IM Asia DD Bocconi-Essec and IM Global Experience courses, for which specific English language requirements must be fulfilled by July 2025.

Approximately **65%** of the total seats are reserved for Bocconi applicants, divided into two rounds. Remember that it is not possible to estimate with certainty whether in either round you will get in with a higher/lower average in a particular degree program. It all depends on the number of applications and the scores of students who apply.

Specifically:

Round 1: The first round is open to all students who, as of July 31, 2024, have recorded at least 90 CFUs on their study plan, regardless of the average, and to all three-year undergraduates. In this round, about 60 percent of the available places are allocated to Bocconi students, so in case the number of applications exceeds the available places, a ranking will be made based on the application score.

Round 2: Round 2 is open to all students who, as of April 30, 2025, have earned at least 110 CFUs (including already registered internships, etc. by April 2025). Round 2 is open to all students who meet the above requirement and having participated in round 1 does not affect the possibility of participation in Round 2. Obviously, to participate in the second round, one must not have enrolled in a Master's degree program during the first round. Any places rejected during the first round will be awarded during the second round.

For every other information that you need: [Official link](#)



VERSIONE IN ITALIANO

Gli studenti Bocconi possono applicare per il programma Magistrale unicamente nelle due sessioni previste. Non è dunque possibile applicare, come per le altre tipologie di candidati, tramite test o presentando certificati equivalenti (ex. Gmat).

Le tempistiche di application per l'a.a. 2025-2026 sono le seguenti:

	I round	II round
Domanda di ammissione	18 luglio 2024 - 10 ottobre 2024 (ore 15)	13 febbraio 2025 - 29 aprile 2025 (ore 15)
Esiti	21 novembre 2024	29 maggio 2025
Immatricolazione	21 novembre - 12 dicembre 2024	29 maggio - 10 giugno 2025

Il momento in cui inoltrerete la domanda di application non influirà sul risultato, non verrà dunque favorito chi ha presentato la propria richiesta, ad esempio, il 19 Luglio rispetto a chi lo ha fatto il 9 ottobre.

Il punteggio con cui si andrà ad applicare è dato da:

- Media in centodecimi. La media è da considerare sulla base di tutti gli esami registrati a libretto: per gli esami che prevedono più moduli, vengono considerati i singoli moduli separatamente e non il modulo complessivo, per questo la media ponderata potrebbe differire leggermente da quella mostrata su You@B.
- 1 centodecimo bonus per lo Status di Studente in Corso (Per maggiori informazioni clicca [qui](#))
- Per ogni CFU eccedente il minimo per presentare domanda (ex. 90 per il primo round), un punteggio bonus di 0.05 centodecimi.

Dunque, ad esempio, se sono uno studente che applica al primo round con una media di 26.00, che dispone dei requisiti di "studente in corso" e con 100 CFU, avrò un punteggio pari a:

- Media convertita in centodecimi: $26.00 \cdot 110 / 30 = 95.33$
- 1 punto bonus poiché rispetto i requisiti di studente in corso
- $(\text{CFU registrati a libretto} - 90 \text{ CFU (minimo richiesto al primo round)}) \cdot 0.05 = (100 - 90) \cdot 0.05 = 10 \cdot 0.05 = 0.5$

Il mio punteggio finale di application sarà: $95.33 + 1 + 0.5 = 96.83$

Il punteggio di graduatoria verrà costruito secondo questi criteri e l'assegnazione dei posti sarà effettuata procedendo in ordine decrescente dal candidato con punteggio maggiore con l'attribuzione del corso di laurea di prima scelta (fino ad esaurimento dei posti disponibili) o eventualmente a quello di seconda, terza, quarta e quinta scelta (sempre fino ad esaurimento dei posti disponibili).

NOTA BENE: Eventuali attività come stage, certificazioni linguistiche ecc., saranno considerate esclusivamente se registrati entro luglio 2024. Controlla che tutto sia stato registrato correttamente ed eventualmente contatta gli Uffici preposti.



L'application dovrà essere inviata tramite il portale MyApplication. In fase di scelta potranno essere indicati fino ad un massimo di 5 corsi. Le selezioni per LSE-Bocconi e Sciences Po-Bocconi Double Degree avvengono secondo procedure dedicate.

Agli studenti in fase di application non sarà richiesto presentare alcuna certificazione linguistica, dato che il requisito è automaticamente assolto grazie all'insegnamento di lingua previsto a piano studi. Pertanto, basterà avere a piano studi un voto per inglese entro ottobre 2025, termine ultimo per laurearsi (non importa se si assolve facendo esame interno, convertendo una certificazione linguistica ecc.). ECCEZIONE viene fatta per i corsi IM CEMS MIM, IM Asia DD Bocconi-Essec e IM Global Experience, per cui sono necessari specifici requisiti di lingua inglese da assolvere entro luglio 2025.

Ai candidati Bocconi è riservato circa il 65% dei posti totali, divisi in due round. Ricordiamo che non è possibile stimare con certezza se in uno dei due round si riuscirà ad entrare con una media superiore/inferiore in un determinato corso di laurea. Tutto dipende dal numero di application e dal punteggio degli studenti che applicano.

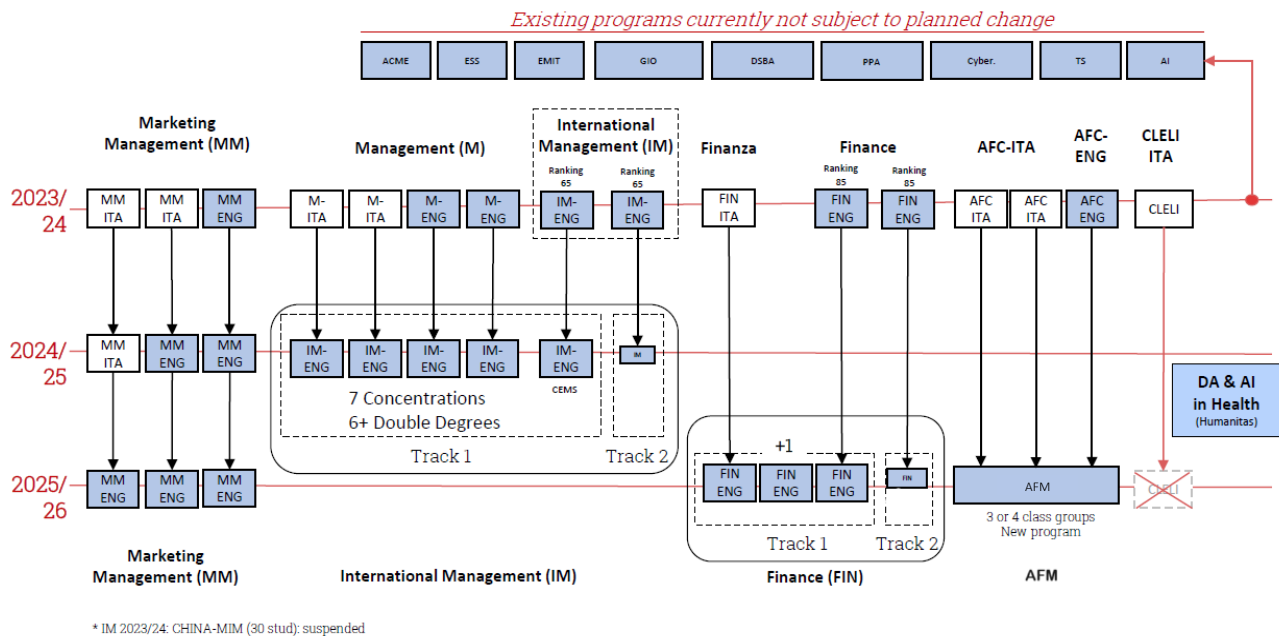
Nello specifico:

- ROUND I: Il primo round è aperto a tutti gli studenti che, al 31 luglio 2024, abbiano registrato a piano studi almeno 90 CFU, indipendentemente dalla media, ed a tutti i laureati triennale. In questo round viene assegnato circa il 60% dei posti disponibili agli studenti Bocconi, dunque in caso di numero di domande superiore ai posti disponibili verrà stilata una graduatoria basata sul punteggio di application.
- ROUND II: Il secondo round è aperto a tutti gli studenti che, al 30 aprile 2025, hanno conseguito almeno 110 CFU (compresi stage già registrati ecc. entro il 30 Aprile 2025). Il secondo round è aperto a tutti gli studenti che soddisfano il requisito di cui prima, e non influisce sulla possibilità di partecipazione l'aver partecipato al primo round di selezione. Ovviamente, per partecipare al secondo, non ci si deve essere immatricolati ad un corso di Laurea magistrale durante il primo round. Eventuali posti rifiutati nel corso del primo round, saranno assegnati durante il secondo.



CHANGES IN MASTER'S DEGREE PROGRAMS

For the first time, all Master's degree courses will be taught in English.



In addition, there are also particular **changes** in the courses that will be taught from 2025/2026. All the specific details are contained in the official materials provided by Bocconi University, but here we highlight the most important ones:

- The course of **FINANCE** will be modified, with a shift to an "English version only," meaning the suppression of the class group of FINANZA. We will go from having 2 class groups Finance (170 spots) and one class group Finanza (85 spots), to having 3 class groups Finance-track 1 (255 spots) and 1 class group Finance-track 2 (50 spots).
- The **CLELI** and **AFC** courses will be merged into a new course taught in English, which starting from a common teaching base will allow the possibility of choosing between different tracks in a way that allows specialization in different professional profiles.

If I get admitted to a course and then want to change, can I do so? How?

Yes, in case you are accepted you will still be able to request to transfer to a degree program listed as a "lower" choice than the one in which you were accepted (so if I am accepted in my third choice, I will be able to request to be moved to my fourth or fifth choice) or to a degree program not listed in the application phase. The transfer will not be automatically accepted, but the Offices consistent with the entrance rankings will evaluate the request. Timelines change from year to year, so we recommend checking through official channels and communications from the University for those for a.y. 2025-2026.



FINANCE (English)



First year	Second Year (at Bocconi, Milan and/or abroad)
<ul style="list-style-type: none">• Investments and Portfolio Decisions• Financial Modelling• Corporate Valuation• Financial Analysis and Reporting• Statistical Methods in Inference and Forecasting• Derivative Pricing• Investment Banking and Capital Structure Operations• Company and Financial Markets' Law and Regulations• Risk Management and Capital Compliance• Econometrics of Time Series Applied to Pricing and Portfolio Management	<ul style="list-style-type: none">• 4 electives (free track or majors)• Foreign languages (two languages)• Enhancing Experience (Curricular Supplementary Activities)• Thesis
study plan (link to the website)	

Exchange Programs

Double Degrees with:

- ESADE Escuela Superior de Administracion y Direccion de Empresas (Barcelona, Spain)
- HEC École des Hautes Etudes Commerciales (Paris, France)
- Keio University (Tokyo, Japan)
- RSM Rotterdam School of Management, Erasmus University (Rotterdam, the Netherlands)
- Stockholm School of Economics (Stockholm, Sweden)
- NOVA School of Business & Economics (Lisbon, Portugal)

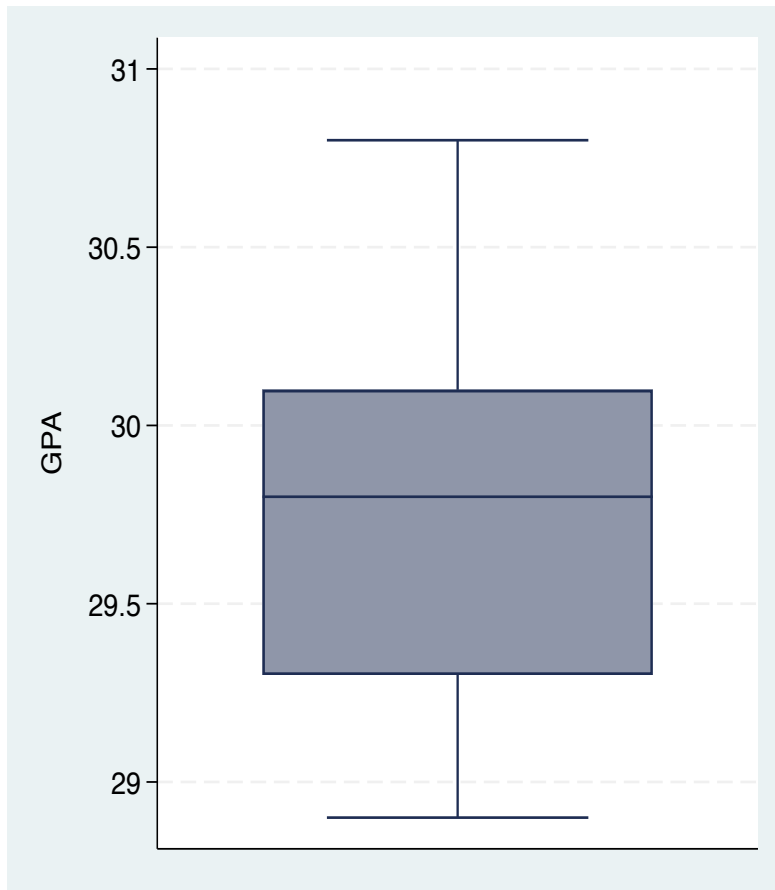
Internship (compulsory)



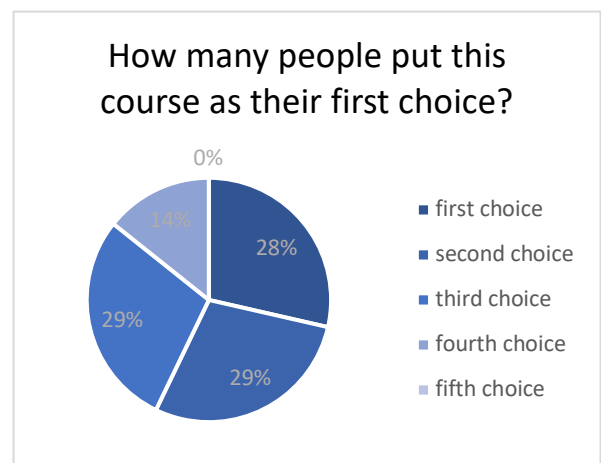
First round of application

Number of observations from our survey: 30

Box plot with the all the scores and last two scores that secured a place in the course:



GPA	CFU	Score
29	116	107,633
28,9	118	107,367



Maximum GPA which didn't get admitted in this course in the 1 round: **28,91** with **116** CFU

Second round of application

Unfortunately, the data we collected is incomplete and could be misleading, with just **1** observation.

The lower GPA is **28,47** with **156** cfu



FINANZA (Italiano)



(not available anymore)

First year	Second Year (at Bocconi, Milan and/or abroad)
<ul style="list-style-type: none">• Teoria degli investimenti e delle scelte di portafoglio• Modellizzazione finanziaria• Valutazioni d'azienda• Contabilità e analisi di bilancio• Metodi statistici per l'inferenza e la previsione• Teoria del prezzo dei derivati• Investment Banking e operazioni di finanza d'impresa• Diritto dei mercati finanziari• Gestione del rischio• Econometria delle serie finanziarie e applicazioni alla gestione di portafoglio	<ul style="list-style-type: none">• 4 opzionali (piano libero o majors)• Lingue straniere (due lingue)• Enhancing Experience (Curricular Supplementary Activities)• Tesi
study plan (link to the website)	

Exchange Programs

Double Degrees with:

- ESADE Escuela Superior de Administracion y Direccion de Empresas (Barcelona, Spain)
- HEC École des Hautes Etudes Commerciales (Paris, France)
- Keio University (Tokyo, Japan)
- RSM Rotterdam School of Management, Erasmus University (Rotterdam, the Netherlands)
- Stockholm School of Economics (Stockholm, Sweden)
- NOVA School of Business & Economics (Lisbon, Portugal)

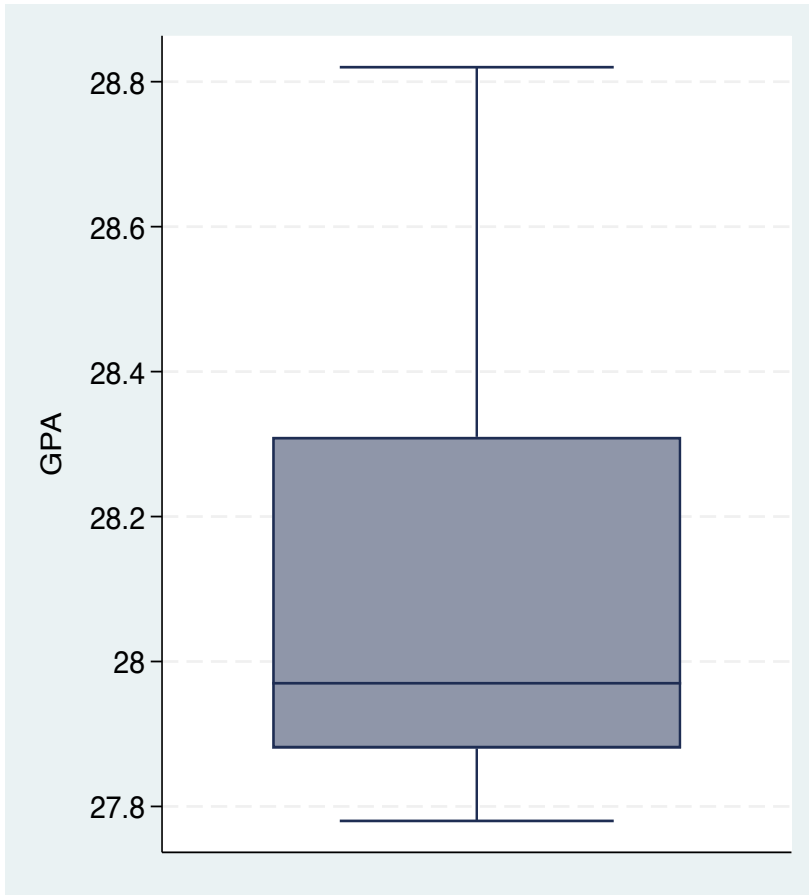
Internship (compulsory)



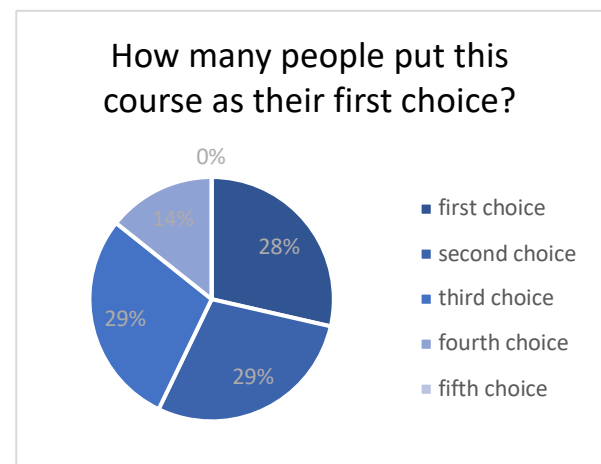
First round of application

Number of observations from our survey: 13

Box plot with the all the scores and last two scores that secured a place in the course:



GPA	CFU	Score
27,78	118	103,26
27,79	115	103,147



Maximum GPA which didn't get admitted in this course in the 1 round: **27,5** with **100** CFU

Second round of application

GPA	CFU
27,80	149
27,61	149
27,4	158



INTERNATIONAL MANAGEMENT CEMS

First year	Second Year (at Bocconi and at CEMS partner university)
<ul style="list-style-type: none"> • Corporate Strategy • Geopolitics and Business • Macroeconomics • Organization • Marketing Decisions • International Finance • Principles of Business Analytics • Performance Measurement • International Comparative Business Law 	<ul style="list-style-type: none"> • Global Operations and Supply Chain Management • Global Strategy • Block seminar • Other CEMS courses • Global Leadership • Global Citizenship Seminar • Business project • Skill seminars • Languages (3, one of them must be English) • Thesis
General information about CEMS	

It is a global program (34 prestigious partner universities, around 70 corporate partners, and 8 social partners) of which Bocconi is one of the four founding members and the only Italian partner university.

In addition to the elements of evaluation valid for all the MSc programs the Admission Committee needs to evaluate the intellectual potential, together with their international orientation and motivation.

For this reason, further specific elements of evaluation are required:

1. A specific and dedicated statement of motivation
2. A [special programs video interview](#) (compulsory)

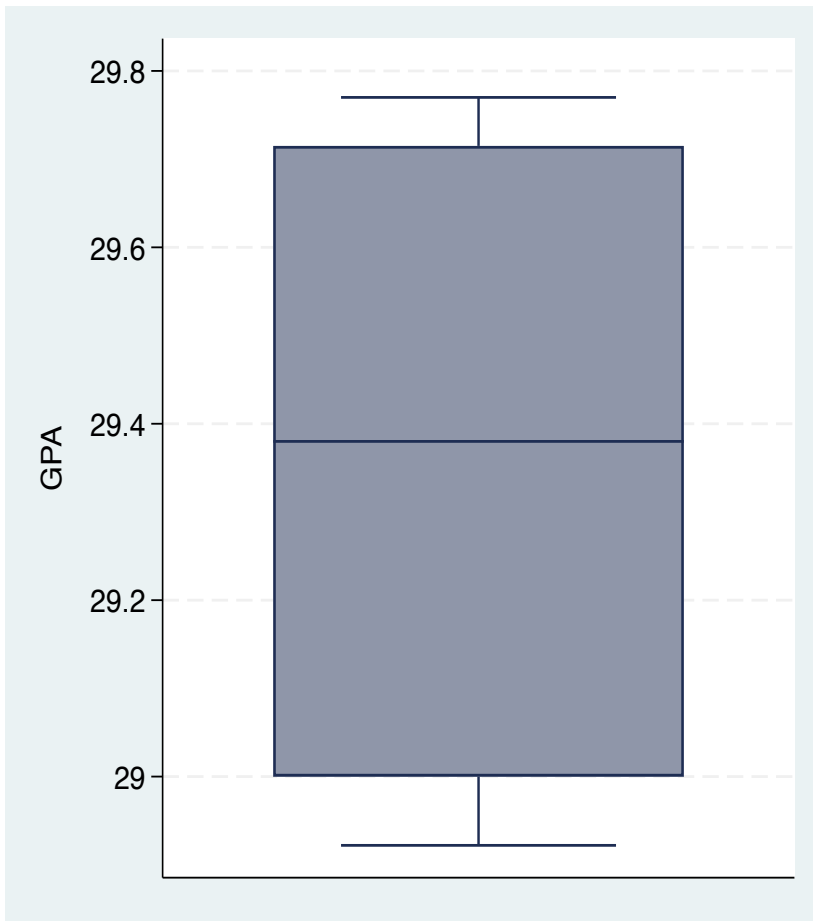
Internship abroad (compulsory, can not overlap with the academic term)



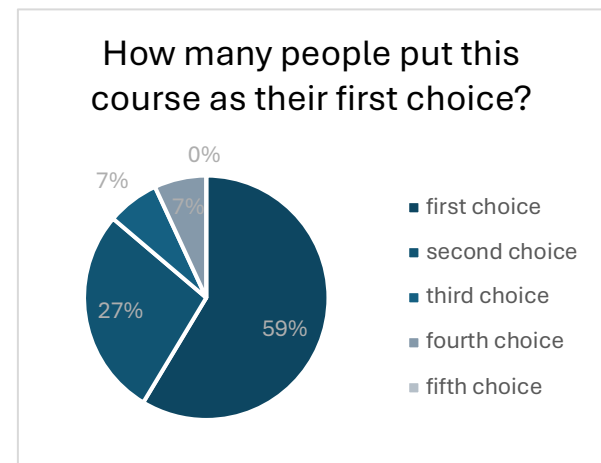
First round of application

Number of observations from our survey: 8

Box plot with the all the scores and last two scores that secured a place in the course:



GPA	CFU	Score
28,98	114	107,46
28,92	115	107,297



Maximum GPA which didn't get admitted in this course in the 1 round: **28,65** with **128** CFU

Second round of application

Unfortunately, the data we collected is incomplete and could be misleading, with just **1** observation.

The lower GPA is **29,01** with **158** cfu



INTERNATIONAL MANAGEMENT DOUBLE DEGREE ESSEC

First year (Milan, Singapore)	Second Year (Milan, Cergy)
<ul style="list-style-type: none"> • Corporate Finance • Corporate Strategy • Marketing Management • Performance Measurement • Business Law • Human Resource Management • Economics & Society • Business Analytics 	<ul style="list-style-type: none"> • 2 compulsory courses • 5 elective courses • Curricular Supplementary Activities • Foreign Languages (two languages): <ul style="list-style-type: none"> ○ First Foreign Language: English ○ Second Foreign Language: Italian for students who are not Italian native speakers • Thesis
general information about admission	

The Double Degree program will be open to **25 ESSEC** and **25 Bocconi students** every year. At graduation, students will receive the Bocconi University **MSc in International Management degree** and the ESSEC **MSc in Management degree** (Grande Ecole).

This program gives students the opportunity to study in **three different locations**: the Bocconi Milan campus (Italy), the ESSEC Singapore campus (Singapore) and the ESSEC Cergy campus (France).

In addition to the elements of evaluation valid for all the MSc programs the Admission Committee needs to evaluate the intellectual potential, together with their international orientation and motivation.

For this reason, further specific elements of evaluation are required:

3. A specific and dedicated statement of motivation
4. A [special programs video interview](#) (compulsory)

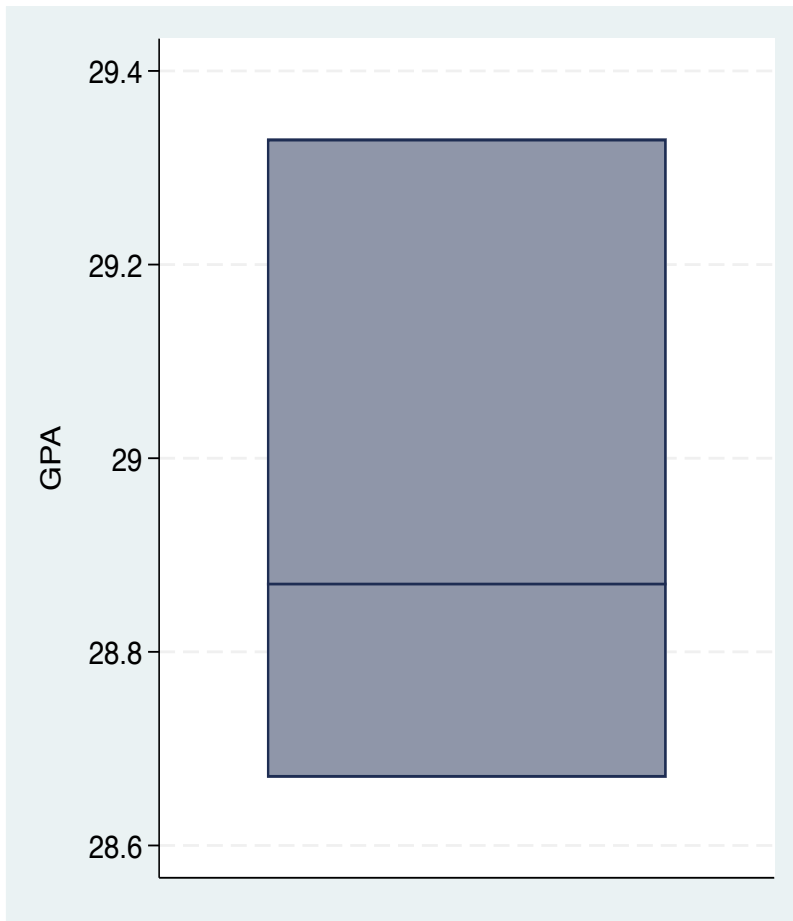
Internship (compulsory)



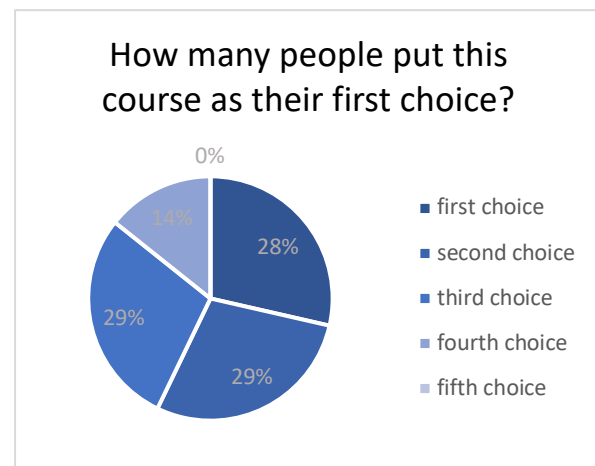
First round of application

Number of observations from our survey: 3

Box plot with the all the scores and last two scores that secured a place in the course:



GPA	CFU	Score
29,33	114	108,743
28,87	120	107,357



Maximum GPA which didn't get admitted in this course in the 1 round: **28,45** with **118** CFU

Second round of application

No data available



INTERNATIONAL MANAGEMENT CONCENTRATIONS

First year (at Bocconi)	Second Year (at Bocconi or abroad)
<ul style="list-style-type: none"> • Business analytics • Strategy • Finance • Marketing • Performance measurement • Organization • Economics • Law • Behavioral skills seminar • Managerial applications (business game) 	<ul style="list-style-type: none"> • one compulsory concentration course • one concentration elective on data analysis • one concentration elective • one free elective • language course (two languages) • supplementary curricular activities • thesis
Study plan (link to the website)	

Concentrations:

- Human Resource Management and Change Management
- Consulting
- Managerial Corporate Finance
- Performance Analysis and Management
- Entrepreneurship
- Luxury and Fashion Management
- Sport Management
- Open path (reserved for Double Degree, Exchange Program, and Free Mover students only)

Exchange

Double degree: (see IM GLOBAL EXPERIENCE)

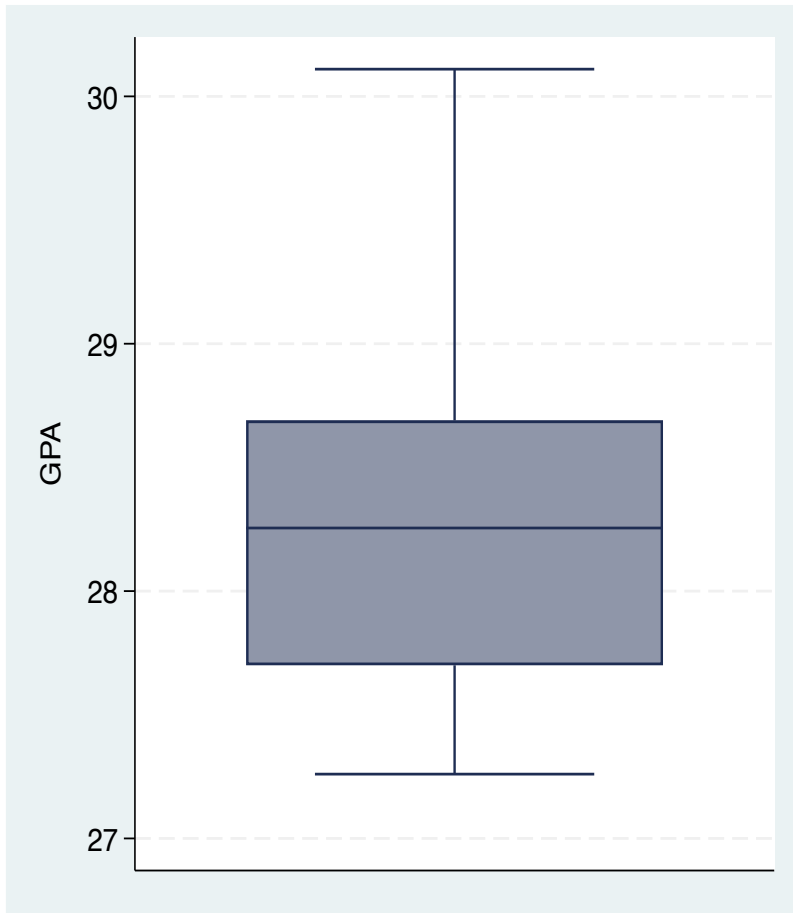
Internship (compulsory)



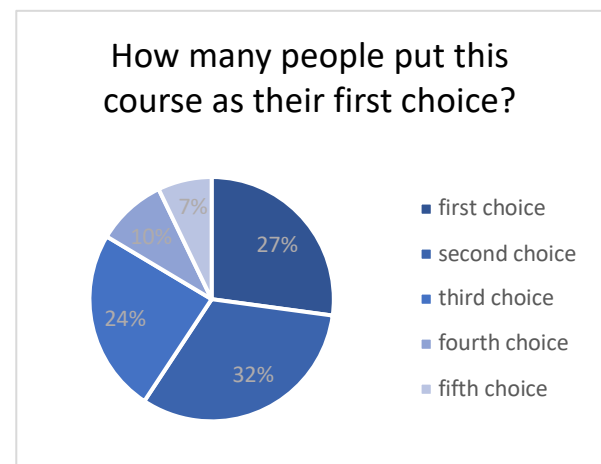
First round of application

Number of observations from our survey: 38

Box plot with the all the scores and last two scores that secured a place in the course:



GPA	CFU	Score
27,26	119	101,403
27,27	117	101,347



Maximum GPA which didn't get admitted in this course in 1 round: **27,2** with **117** cfu

Second round of application

GPA	CFU
26,70	164
26,50	141
26,39	156
25,99	164
25,95	141
25,6	164
25,37	153



INTERNATIONAL MANAGEMENT GLOBAL EXPERIENCE

First year (at Bocconi)	Second Year (at Bocconi and/or abroad)
<ul style="list-style-type: none"> • Business analytics • Strategy • Finance • Marketing • Performance measurement • Organization • Economics • Law • Behavioral skills seminar • Managerial applications (business game) 	<ul style="list-style-type: none"> • one course on supply chain management • one elective course in the area of management • two free electives • language course (two languages) • supplementary curricular activities • thesis
Study plan (link to the website)	

Exchange and/or Internship abroad (one of them compulsory)

Double degree (shared with IM CONCENTRATION):

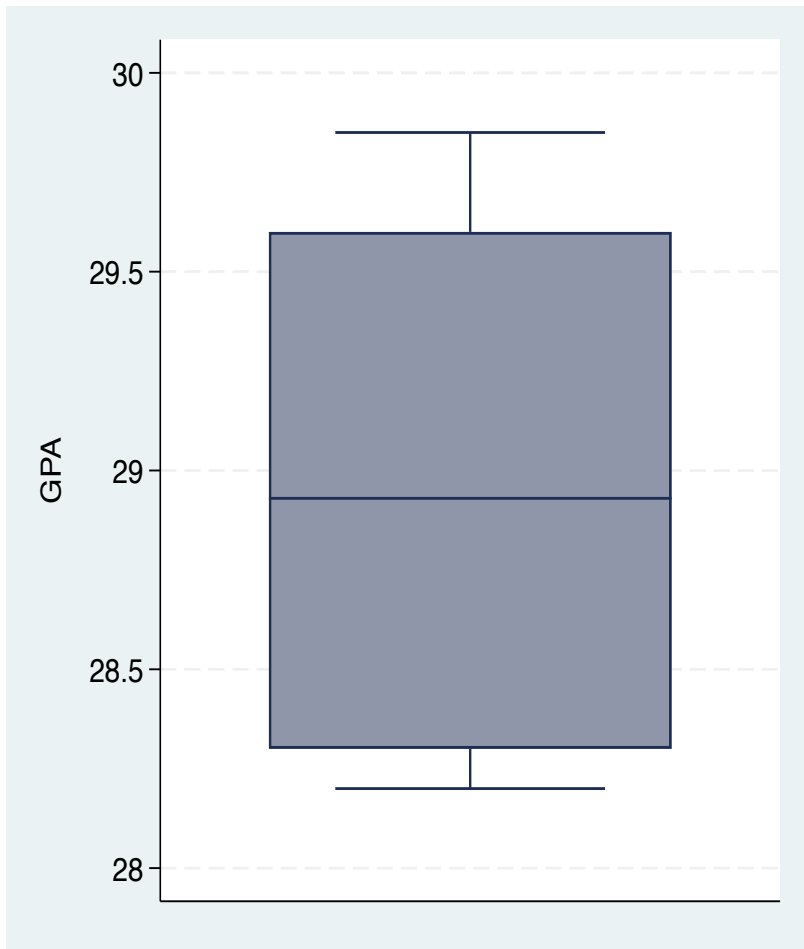
- **Bayes School of Business** (London, UK)
- **Darla Moore School of Business** (Columbia, US)
- **ESADE** Escuela Superior de Administracion y Direccion de Empresas (Barcelona, Spain)
- **FGV-EAESP** Escola de Administração de Empresas de São Paulo da Fundação Getulio Vargas (São Paulo, Brazil)
- **HEC** École des Hautes Etudes Commerciales (Paris, France)
- **HEC** Montréal (Montréal, Canada)
- **HSG** University of St. Gallen (St. Gallen, Switzerland)
- **IIMA** Indian Institute of Management (Ahmedabad, India)
- **IIMB** (Indian Institute of Management, Bangalore, India)
- **NHH** Norwegian School of Economics (Bergen, Norway)
- **RSM** Rotterdam School of Management, Erasmus University (Rotterdam, the Netherlands)
- **The University of Queensland** (Brisbane, Australia)
- **WU** **Wirtschaftsuniversität Wien** (Vienna, Austria)



First round of application

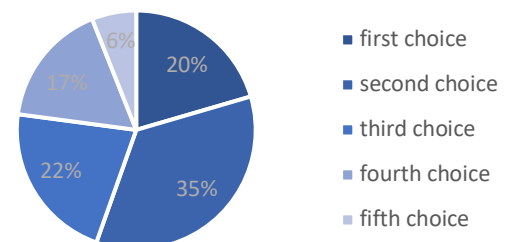
Number of observations from our survey: 5

Box plot with the all the scores and last two scores that secured a place in the course:



GPA	CFU	Score
28,3	119	105,217
28,2	114	104,6

How many people put this course as their first choice?



Maximum GPA which didn't get admitted in this course in the 1 round: **no data available**

Second round of application

Unfortunately, the data we collected is incomplete and could be misleading, with just **1** observation.

The lower GPA is **28,12** with **150** cfu



ECONOMICS AND MANAGEMENT OF INNOVATION TECHNOLOGY



First year (at Bocconi)	Second Year (at Bocconi and/or abroad)
<ul style="list-style-type: none"> • technology evolution and markets for technology • innovation processes within and outside firms • intellectual property rights and competition • how innovative entrepreneurs may obtain financing • how to develop, experiment with and choose among alternative strategies • how firms use technology and innovation to position themselves strategically 	<ul style="list-style-type: none"> • one innovation specific elective • three electives (majors or free track) • language course (two languages) • supplementary curricular activities • thesis
Study plan (link to the website)	

Majors (click to have further information):

- **Green Management and Sustainability** (major A)
- **Technology and Innovation Management** (major B)
- **IT Consulting** (major C)
- **Big Data and Business Analytics** (major D)

Exchange

Double degree

- **CBS** Copenhagen Business School (Copenhagen, Denmark)
- **NHH** Norwegian School of Economics (Bergen, Norway)
- **RSM** Rotterdam School of Management, Erasmus University (Rotterdam, the Netherlands)
- **Universidade Católica Portuguesa** (Lisbon, Portugal)
- **WU** Wirtschaftsuniversität Wien (Vienna, Austria)

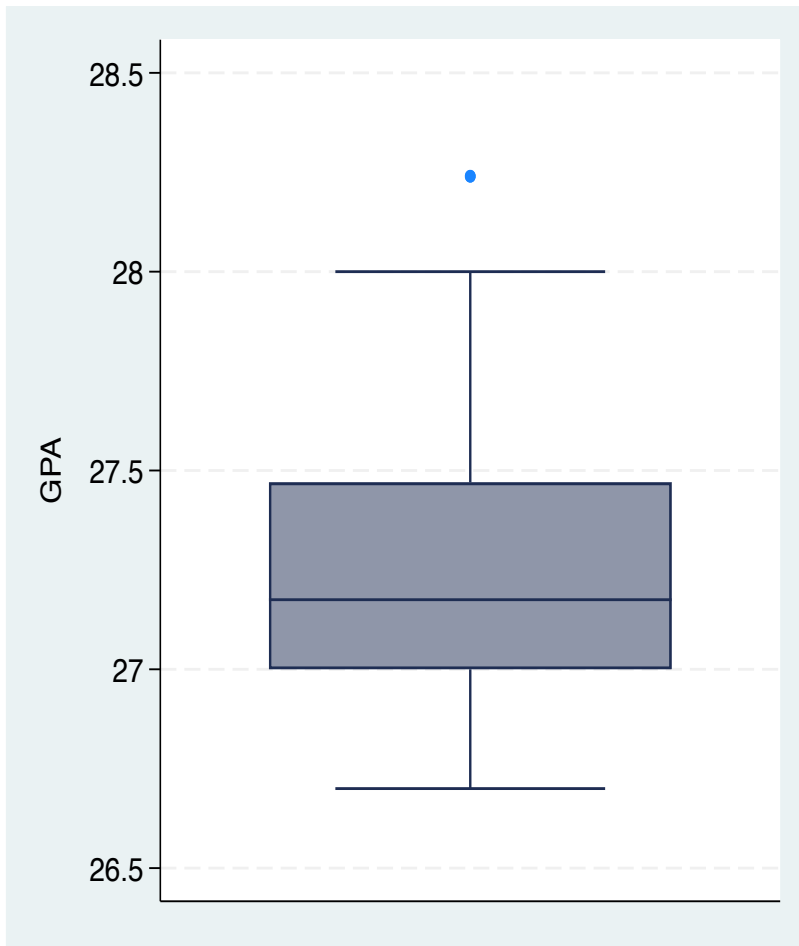
Internship (compulsory)



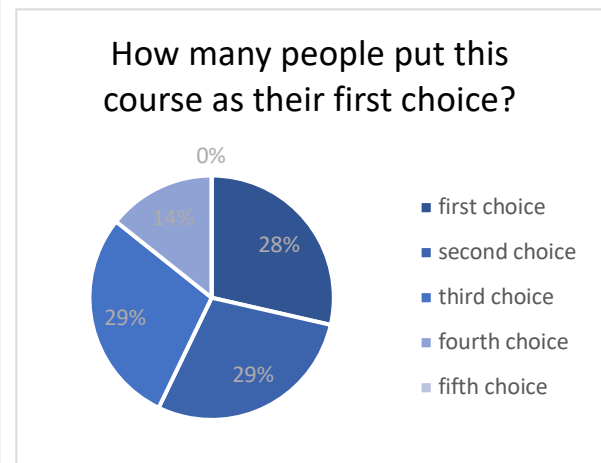
First round of application

Number of observations from our survey: 20

Box plot with the all the scores and last two scores that secured a place in the course:



GPA	CFU	Score
26,93	104	99,443
26,8	110	99,267



Maximum GPA which didn't get admitted in this course in the 1 round: **26,48** with **102** CFU

Second round of application

GPA	CFU
27,2	150
26,44	144
25,93	136
25,00	152



MARKETING MANAGEMENT (english)



First year (at Bocconi)	Second Year (at Bocconi and/or abroad)
<ul style="list-style-type: none">• Strategic Marketing Tools• Market Sensing• Global Vision and Economic Scenarios• Go-to-Market Tools• Marketing Analytics• Innovation and Competitive Paths	<ul style="list-style-type: none">• four electives (majors or free track)• language course (two languages)• supplementary curricular activities• thesis
Study plan (link to the website)	

Majors (click to have further information):

- **Business Communication and Social Media**
- **Distribution Networks and Retailing in the Digital Era**
- **Product and Service Management**
- **Big Data and Business Analytics**

Exchange

Double degree

- **NHH** Norwegian School of Economics (Bergen, Norway)
- **Smith School of Business** at Queen's University (Kingston, Canada)
- **Universidade Catolica** Portuguesa (Lisbon, Portugal)
- **Universität Mannheim** (Mannheim, Germany)
- **The University of Melbourne** (Melbourne, Australia)
- **WU** Wirtschaftsuniversität Wien (Vienna, Austria)

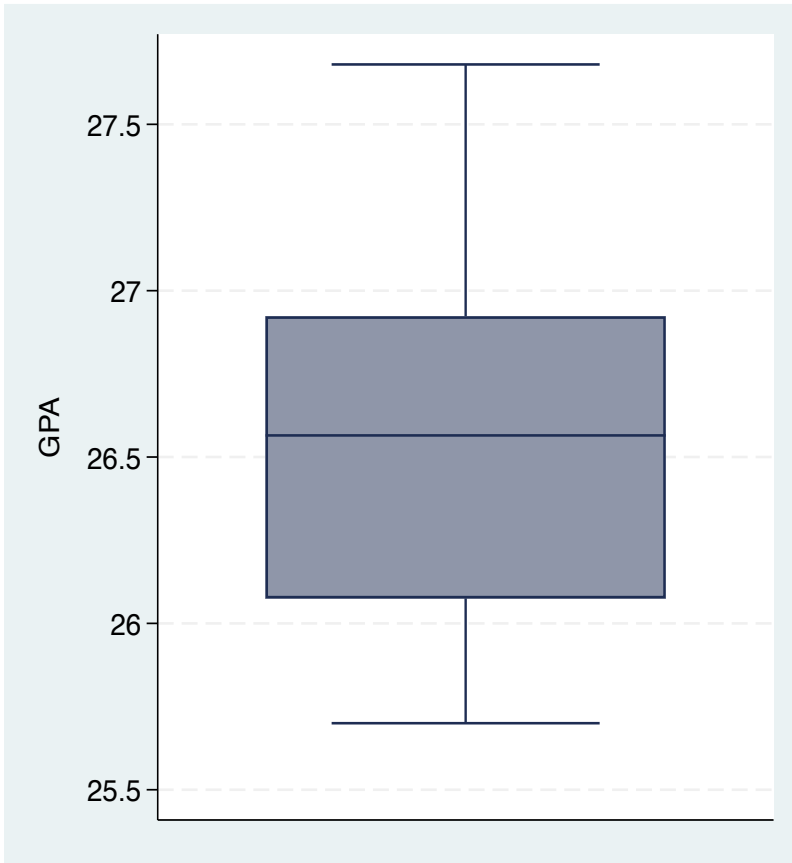
Internship (compulsory)



First round of application

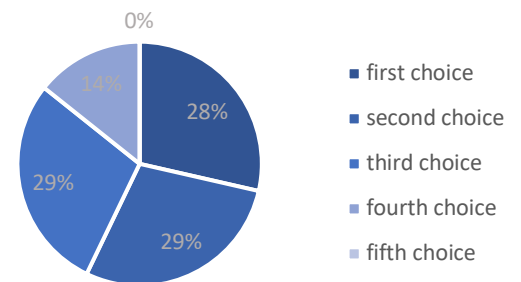
Number of observations from our survey: 12

Box plot with the all the scores and last two scores that secured a place in the course:



GPA	CFU	Score
25,7	121	95,783
25,59	125	95,58

How many people put this course as their first choice?



Maximum GPA which didn't get admitted in this course in 1 round: **25,53** with **116** CFU

Second round of application

No data available



MARKETING MANAGEMENT (italiano)

(not available anymore)

First year (at Bocconi)	Second Year (at Bocconi and/or abroad)
<ul style="list-style-type: none">• Strumenti di marketing strategico• Market Sensing• Scenari economici e visione globale• Lancio e gestione dei prodotti• Marketing Analytics• Gestione delle dinamiche di innovazione e di competizione	<ul style="list-style-type: none">• Quattro opzionali (majors or free track)• Corsi di lingua (due lingue)• supplementary curricular activities• tesi
Study plan (link to the website)	

Majors (clicca per avere maggiori informazioni):

- **Business Communication and Social Media**
- **Distribution Networks and Retailing in the Digital Era**
- **Product and Service Management**
- **Big Data and Business Analytics**

Exchange

Double degree

- **NHH** Norwegian School of Economics (Bergen, Norway)
- **Smith School of Business** at Queen's University (Kingston, Canada)
- **Universidade Catolica** Portuguesa (Lisbon, Portugal)
- **Universität Mannheim** (Mannheim, Germany)
- **The University of Melbourne** (Melbourne, Australia)
- **WU** Wirtschaftsuniversität Wien (Vienna, Austria)

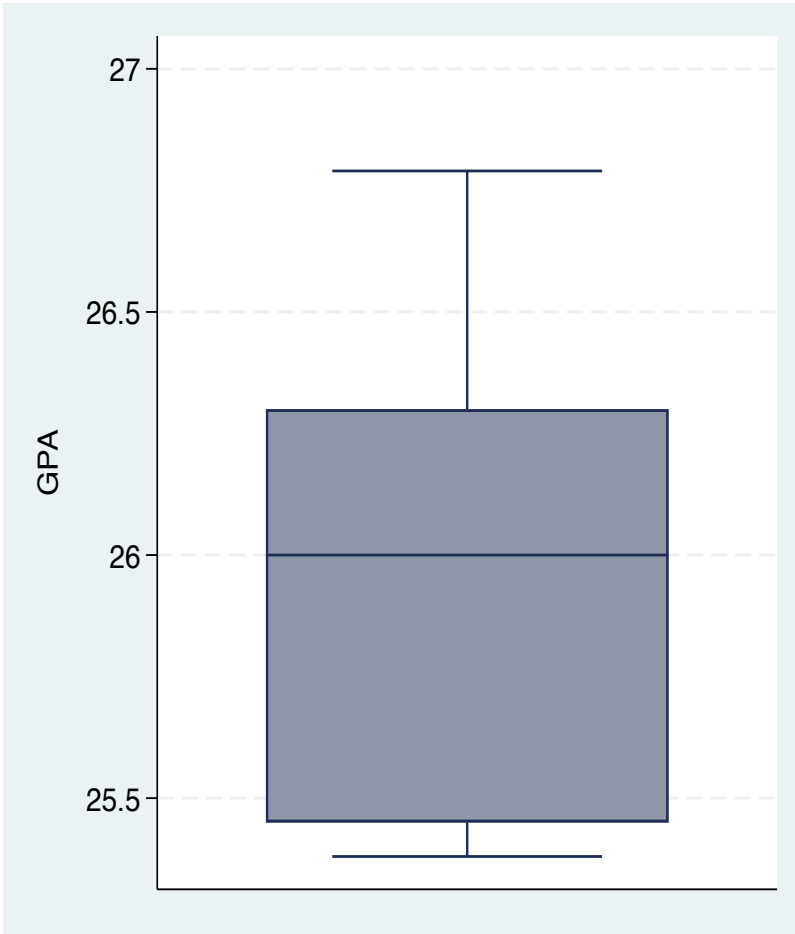
Internship (obbligatoria)



First round of application

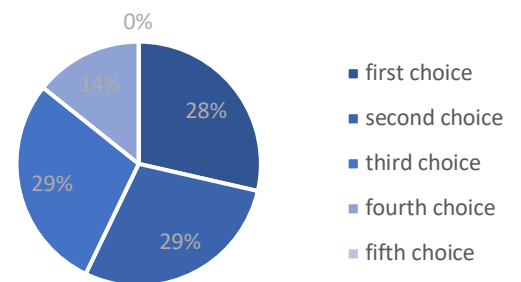
Number of observations from our survey: 7

Box plot with all the scores and last two scores that secured a place in the course:



GPA	CFU	Score
25,45	110	94,317
25,38	115	94,31

How many people put this course as their first choice?



Maximum GPA which didn't get admitted in this course in 1 round: **25,00** with **125** CFU

Second round of application

No data available



ACCOUNTING, FINANCIAL MANAGEMENT AND CONTROL (English)



First year (at Bocconi)	Second Year (at Bocconi and/or abroad)
<ul style="list-style-type: none">• Financial Markets• Corporate Governance• Financial Reporting and Management• Data Analysis• Macroeconomic and Legal Issues• Valuation• Performance Measurement and Control Systems	<ul style="list-style-type: none">• Four electives (majors or free track)• Language courses (two languages)• supplementary curricular activities• thesis
Study plan (link to the website)	

Majors (click for more information):

- **Financial Reporting, Planning and Control**
- **Corporate Finance and Financial Management**
- **Financial Accounting and Data Analytics**
- **Auditing**

Exchange

Double degree

- **HSG** University of St. Gallen (San Gallo, Svizzera)
- **RSM** Rotterdam School of Management, Erasmus University (Rotterdam, Paesi Bassi)
- **Universidade Catolica** Portuguesa (Lisbona, Portogallo)
- **Universität Mannheim** (Mannheim, Germania)
- **Grenoble Ecole de Management** (Grenoble, Francia)

Internship (mandatory)

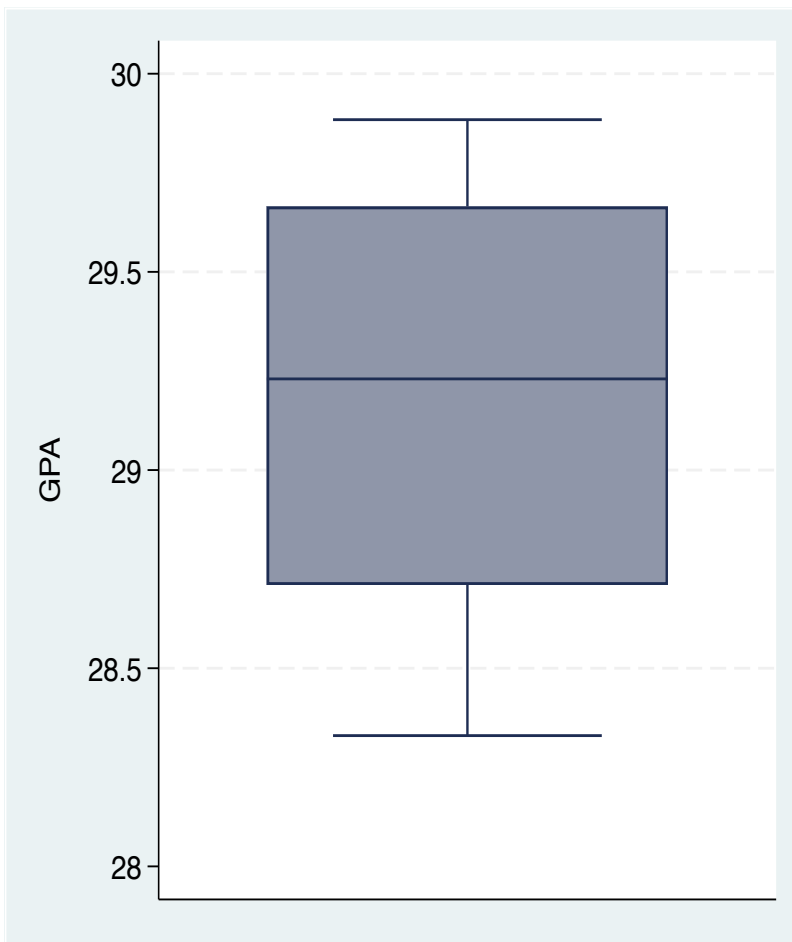
This course will be slightly different starting from September 2024, new information will be published soon



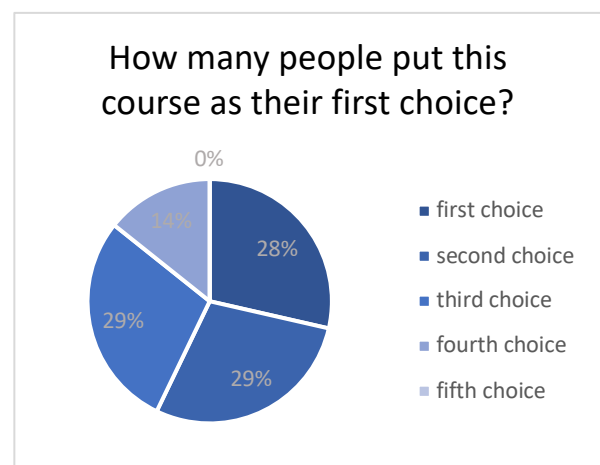
First round of application

Number of observations from our survey: 8

Box plot with the all the scores and last two scores that secured a place in the course:



GPA	CFU	Score
28,42	119	105,657
28,33	119	105,327



Maximum GPA which didn't get admitted in this course in 1 round: **no data available**

Second round of application

Unfortunately, the data we collected is incomplete and could be misleading, with just **1** observation.

The lower GPA is **28,37** with **167** cfu



AMMINISTRAZIONE, FINANZA AZIENDALE E CONTROLLO (italiano)



(not available anymore)

First year (at Bocconi)	Second Year (at Bocconi and/or abroad)
<ul style="list-style-type: none">• Finanza aziendale e mercati finanziari• Corporate Governance• Bilancio e gestione della comunicazione economica• Analisi dei dati• Scenari macroeconomici e diritto dell'impresa• Valutazioni• Misurazione delle prestazioni e controllo di gestione	<ul style="list-style-type: none">• Quattro opzionali (majors or free track)• Corsi di lingua (due lingue)• supplementary curricular activities• tesi
Study plan (link to the website)	

Majors (clicca per avere maggiori informazioni):

- **Amministrazione, Pianificazione e Controllo**
- **Finanza aziendale e gestione finanziaria**
- **Financial Accounting and Data Analytics**
- **Revisione aziendale**

Exchange

Double degree

- **HSG** University of St. Gallen (San Gallo, Svizzera)
- **RSM** Rotterdam School of Management, Erasmus University (Rotterdam, Paesi Bassi)
- **Universidade Catolica** Portuguesa (Lisbona, Portogallo)
- **Universität Mannheim** (Mannheim, Germania)
- **Grenoble Ecole de Management** (Grenoble, Francia)

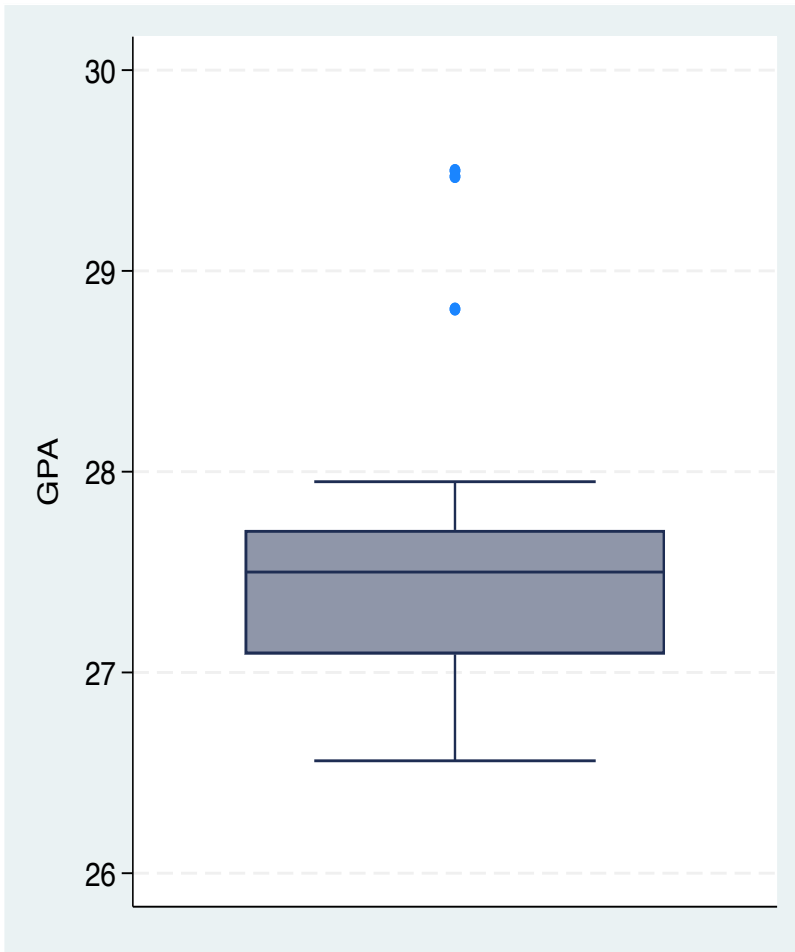
Internship (obbligatoria)



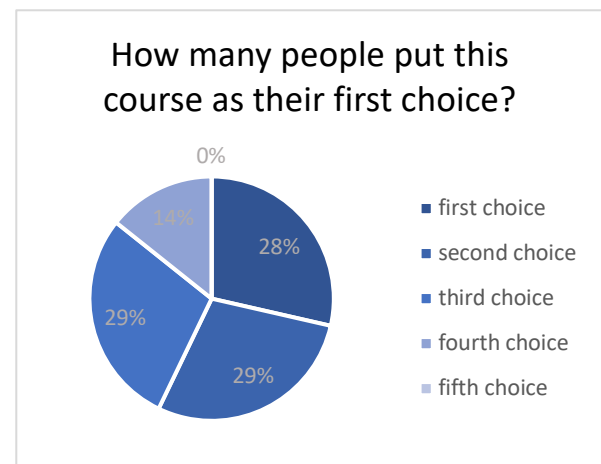
First round of application

Number of observations from our survey: 21

Box plot with the all the scores and last two scores that secured a place in the course:



GPA	CFU	Score
26,81	107	99,153
26,56	125	99,137



Maximum GPA which didn't get admitted in this course in 1 round: **26,48** with **102** CFU

Second round of application

GPA	CFU
27,11	150
26,37	140



ECONOMIA E LEGISLAZIONE PER L'IMPRESA

(not available anymore)



First year (at Bocconi)	Second Year (at Bocconi and/or abroad)
<ul style="list-style-type: none">• Operazioni straordinarie• Valutazioni d'azienda• Bilancio• Diritto commerciale• Corporate governance• Principi contabili internazionali• Diritto tributario• Finanza strategica• Modelli finanziari per la valutazione	<ul style="list-style-type: none">• Diritto dei mercati e degli strumenti finanziari• Tre opzionali (free track)• Language courses (two languages)• supplementary curricular activities• tesi
Study plan (link to the website)	

Exchange

Double degree

- **RSM** Rotterdam School of Management, Erasmus University (Rotterdam, Paesi Bassi)

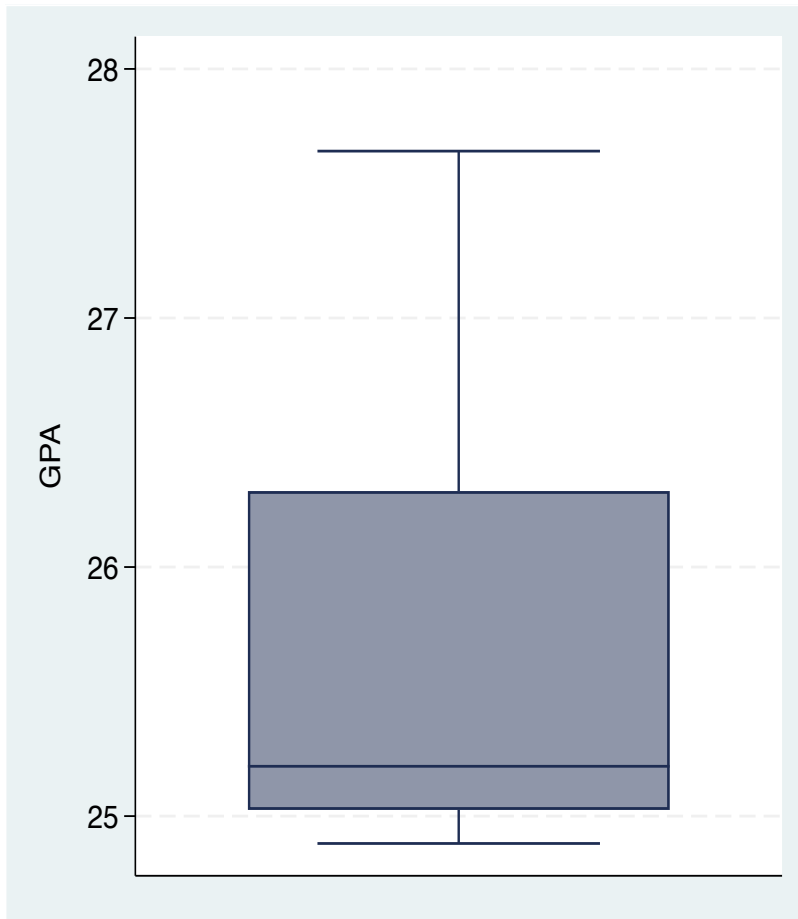
Internship (mandatory)



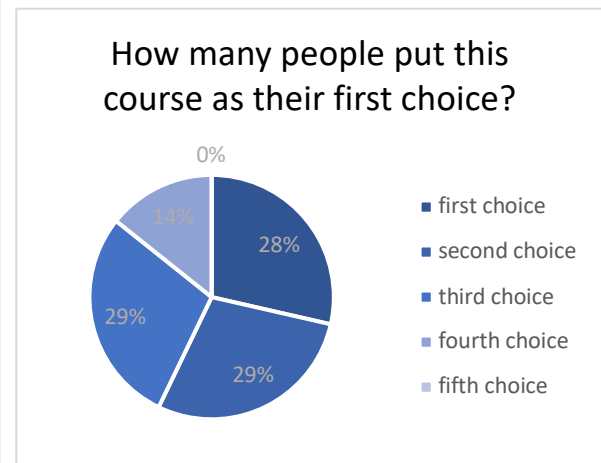
First round of application

Number of observations from our survey: 12

Box plot with the all the scores and last two scores that secured a place in the course:



GPA	CFU	Score
25	111	92,717
24,89	115	92,513



Maximum GPA which didn't get admitted in this course in 1 round: **no data available**

Second round of application

GPA	CFU
25,81	144
25,52	125
25,20	130
24,92	135



ECONOMICS AND MANAGEMENT IN ARTS, CULTURE, MEDIA AND ENTERTAINMENT



First year (at Bocconi)	Second Year (at Bocconi and/or abroad)
<ul style="list-style-type: none"> • Strategic Management and Cultural Entrepreneurship • International Property Law • Performance Measurement and Evaluation • Cultural Studies • Customer Relationship Marketing in the Arts • Fundraising Management • Comparative Cultural Policies • Team and Project Management • Cultural Studies • Major workshops 	<ul style="list-style-type: none"> • major • Language courses (two languages) • supplementary curricular activities • thesis
Study plan (link to the website)	

The program is structured into two different blocks: **core requirements and majors**. In the first block students will develop knowledge and competencies in the areas mentioned above. In the second block, students will choose one major (including compulsory and elective courses) and workshops which aim to better define students' skills.

Major

- **Visual Arts**
- **Tourism**
- **Media**
- **Performing Arts and Mega Event**
- **Fashion and Design**

Exchange

Double degree

- HEC École des Hautes Etudes Commerciales (Paris, France)
- Southern Methodist University/HEC Montréal (Dallas, US/ Montréal, Canada)

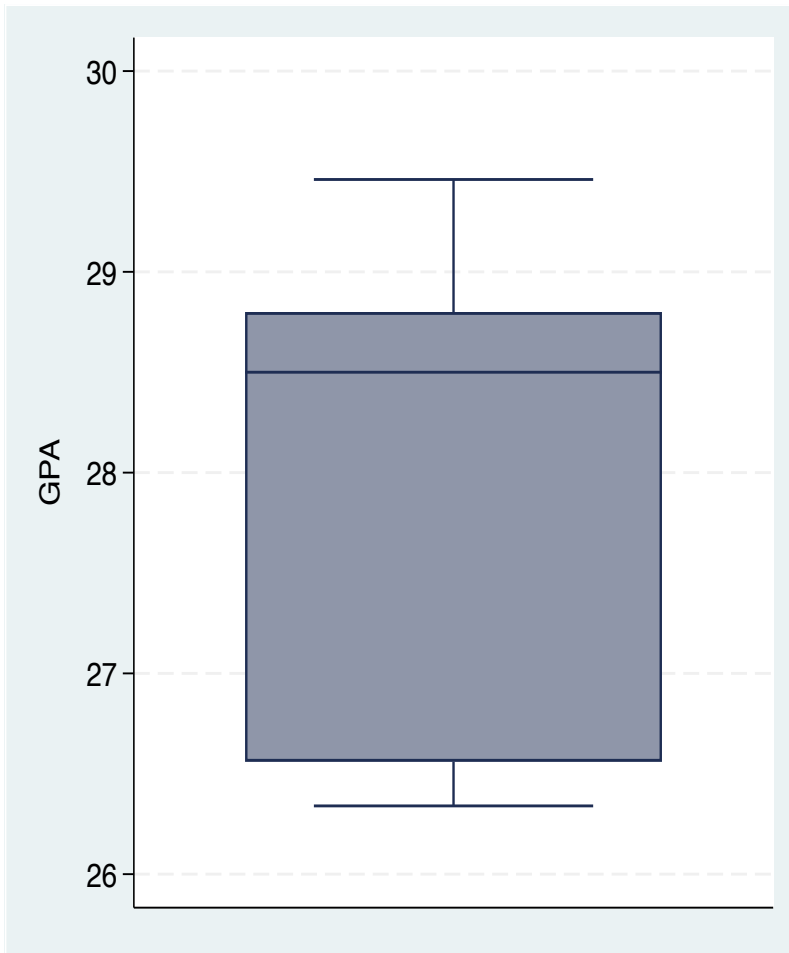


Internship (mandatory)

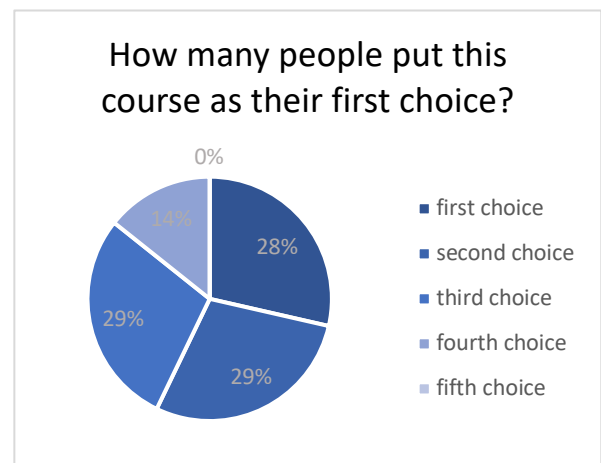
First round of application

Number of observations from our survey: 6

Box plot with the all the scores and last two scores that secured a place in the course:



GPA	CFU	Score
26,56	118	98,787
26,34	114	97,78



Maximum GPA which didn't get admitted in this course in 1 round: **no data available**

Second round of application

Unfortunately, the data we collected is incomplete and could be misleading, with just **1** observation.

The lower GPA is **27,34** with **153** cfu



ECONOMICS AND SOCIAL SCIENCES



First year (at Bocconi)	Second Year (at Bocconi and/or abroad)
<ul style="list-style-type: none"> Advanced Mathematics Advanced Statistics Advanced Econometrics Institutions and Social Sciences Law 3 electives 	<ul style="list-style-type: none"> 4 electives Language courses (two languages) supplementary curricular activities thesis
Study plan and electives (link to the website)	

4 of the electives must be chosen from these 3 list (at least one from each):

Core	Field	Topics and other social sciences
Advanced Microeconomics Advanced Macroeconomics Microeconometrics Macroeconometrics	Development Economics Game Theory: Analysis of Strategic Thinking Empirical Industrial Organization and Market Design International Trade and Globalization Labour Economics Monetary Policy Political Economics – Advanced Public Economics	Economic Analysis of Crime Economics of European Integration Energy Policy and Sustainability Economics of Digital Markets Monetary Policy and Financial Regulation Principles of Finance Taxation, Inequality and Growth Welfare and Politics Comparative Politics: Institutions and Institutional Development Globalization, Divergence, and Inequality in Historical Perspective History, Institutions and Crises of the Financial Global System Population Dynamics and Economics Politics of Conflict Bayesian Statistical Methods Decision Theory and Human Behavior Time Series Analysis of Economic and Financial Data

Exchange

Double degree

- HEC École des Hautes Etudes Commerciales (Paris, France)
- Keio University (Tokyo, Japan)
- Université Catholique de Louvain (Louvain, Belgium) **(JOINT DEGREE)**

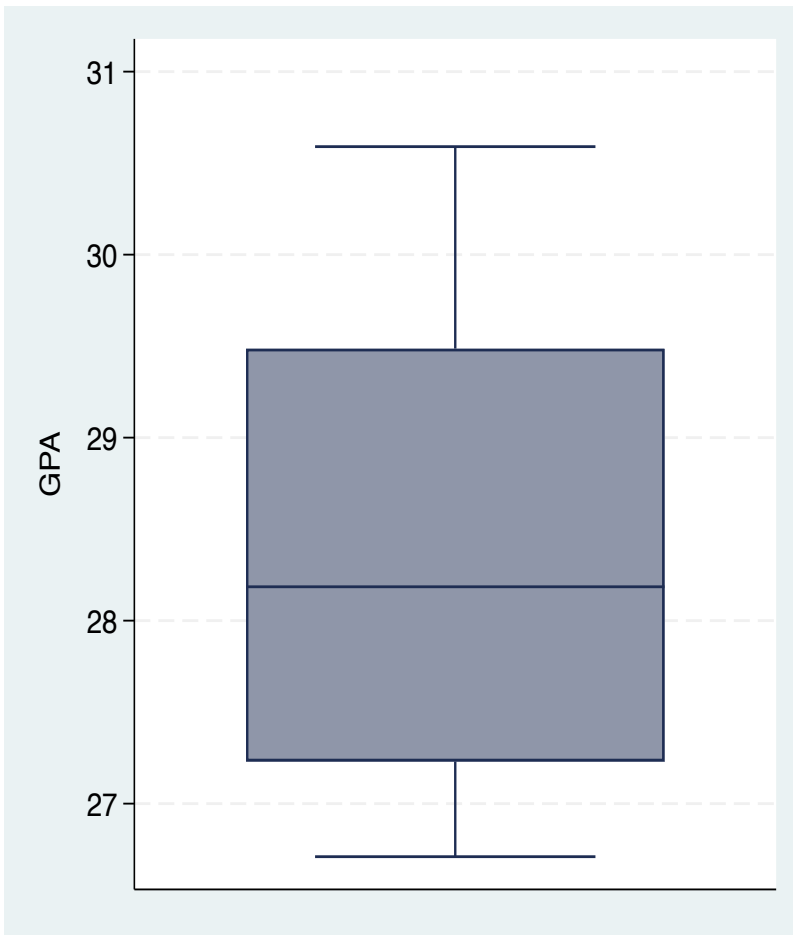
Internship (mandatory)



First round of application

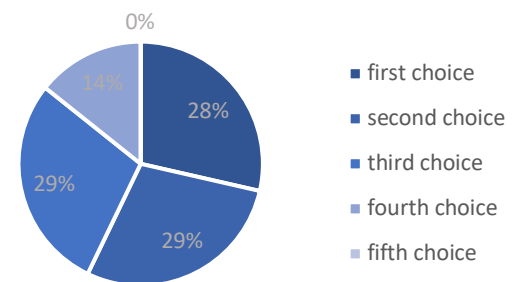
Number of observations from our survey: 12

Box plot with the all the scores and last two scores that secured a place in the course:



GPA	CFU	Score
26,71	121	99,487
26,41	119	98,287

How many people put this course as their first choice?



Maximum GPA which didn't get admitted in this course in 1 round: **26,16** with **110** CFU

Second round of application

GPA	CFU
27,143	119
26,533	150



DATA SCIENCE AND BUSINESS ANALYTICS



QS Rankings 2023

First year (at Bocconi)	Second Year (at Bocconi)
<ul style="list-style-type: none"> • Computer Science • Statistics • Machine Learning • Business Analytics • Marketing and Innovation <p>Data science track</p> <ul style="list-style-type: none"> • Optimization • Computer Science Algorithms <p>Business analytics track</p> <ul style="list-style-type: none"> • Natural Language Processing • Simulation and Modeling 	<ul style="list-style-type: none"> • 2 electives • seminars • Language courses (one eu language) • supplementary curricular activities • thesis <p>Data science track</p> <ul style="list-style-type: none"> • Stochastic Processes • Advanced Machine Learning <p>Business analytics track</p> <ul style="list-style-type: none"> • Finance with Big Data • Deep Learning for Computer Vision
<p>Study plan with tracks (link to the website)</p>	

At the end of the first semester students will choose one of the two **tracks**. The **Data Science track** focuses on statistical and computational methods with emphasis on algorithms, mathematical optimization, modern stochastic modeling and machine learning. The **Business Analytics track** focuses on Natural Language Processing, mathematical modeling and simulations, Finance, and Social Network Analysis.

Click the link above to have more information on the tracks

Exchange

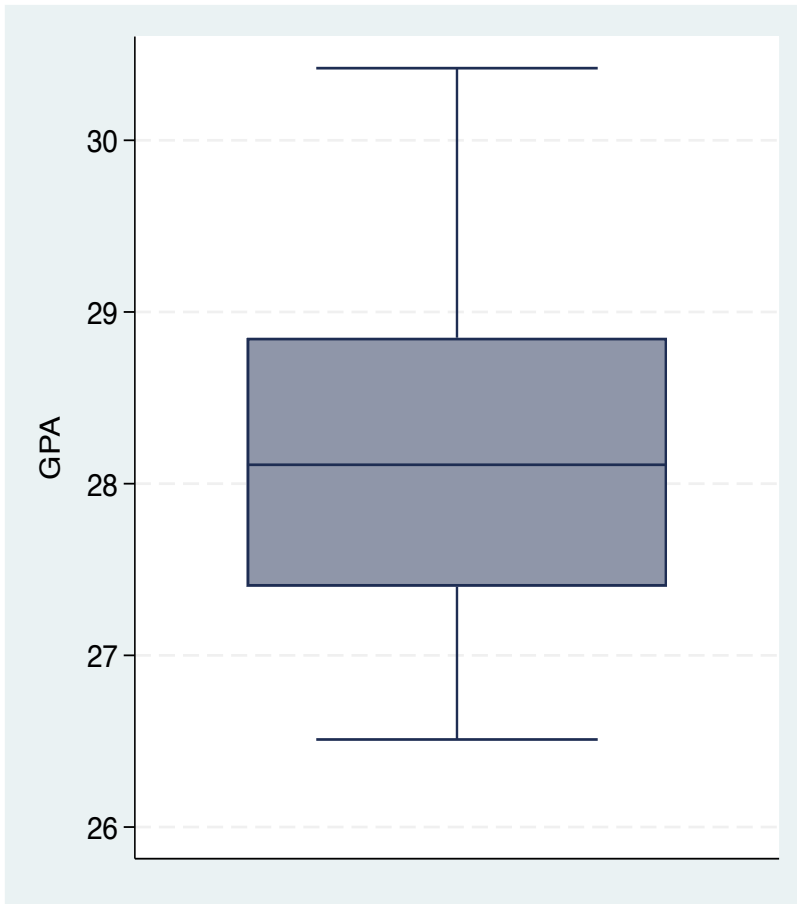
Internship (mandatory)



First round of application

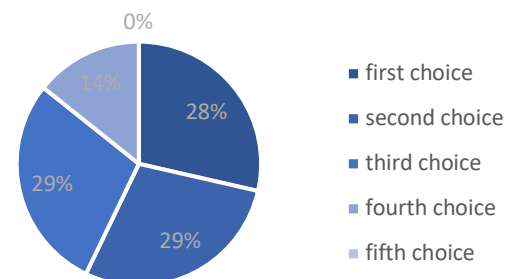
Number of observations from our survey: 9

Box plot with the all the scores and last two scores that secured a place in the course:



GPA	CFU	Score
26,71	121	99,487
26,41	119	98,287

How many people put this course as their first choice?



Maximum GPA which didn't get admitted in this course in 1 round: **26,38** with **123** CFU

Second round of application

Unfortunately, the data we collected is incomplete and could be misleading, with just **1** observation.

The lower GPA is **26,92** with **161** cfu



CYBER RISK STRATEGY AND GOVERNANCE

First year (half at Bocconi half at Polimi)	Second Year (half at Bocconi half at Polimi)
<p>First semester- Polimi</p> <ul style="list-style-type: none"> • Seminar (at Bocconi) • Software methodologies and architectures for security – • Cybersecurity technologies, procedures and policies • Artificial intelligence for security • Technology governance <p>Second semester - Bocconi</p> <ul style="list-style-type: none"> • Seminar (at Polimi) • Strategy and governance • Cyber risk and data protection law • Methods for risk assessment • Institutional scenarios of cyber risk 	<ul style="list-style-type: none"> • 4 electives (two for each university) • 2 seminars (one for each university) • Language courses (one EU language) • Thesis
<p>Study plan (link to the website)</p>	

Applications will be administered by a joint admissions board of representatives from both Bocconi University and Politecnico di Milano. The decision will be based both on **quantitative** (test score/GPA) and **qualitative** (CV, motivational letter) criteria that may be different according to the category of applicant.

Click [this link](#) to have more information on the application procedure.

There are no international programs for this degree.

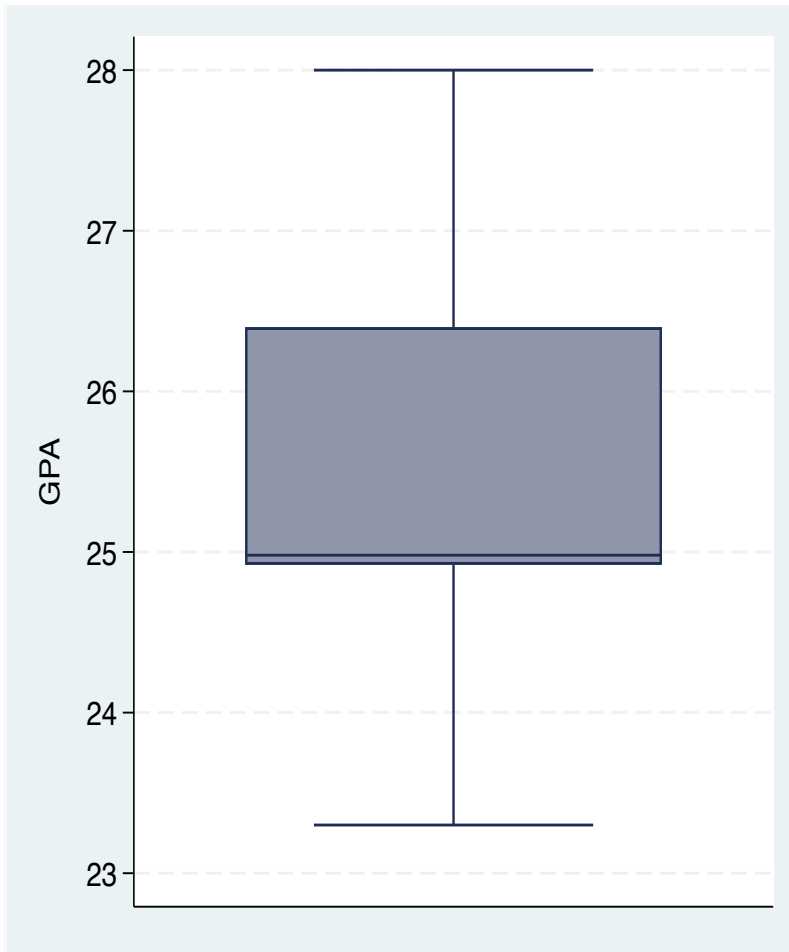
Internship (mandatory)



First round of application

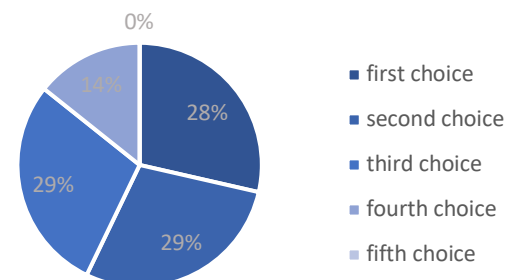
Number of observations from our survey: 9

Box plot with the all the scores and last two scores that secured a place in the course:



GPA	CFU	Score
23,87	107	88,373
23,3	112	86,533

How many people put this course as their first choice?



Maximum GPA which didn't get admitted in this course in 1 round: **no data available**

Second round of application

Unfortunately, the data we collected is incomplete and could be misleading, with just **1** observation.

The lower GPA is **25**



ARTIFICIAL INTELLIGENCE

First year (at Bocconi)	Second Year (at Bocconi)
<ul style="list-style-type: none">• Mathematical Methods in Computer Science• Analysis of algorithms and data structures• Algorithms for optimization and inference• Software engineering• Deep Learning and Reinforcement Learning• Information theory• Computer vision and image processing• Language technology• Machine learning lab• Seminar• Language course	<ul style="list-style-type: none">• Cryptography and security• Complex systems and physical models• Computational Neuroscience• Bio-informatics• 2 electives• supplementary curricular activities• thesis
Study plan and electives (link to the website)	

This program has a strong methodological approach. Students learn solid method-based knowledge that will remain relevant as technology advances. At the same time, they are also exposed to a practical approach, gaining the ability to design and build large software systems.

Click on the link above for more information about the program structure.

There are no international programs for this degree.

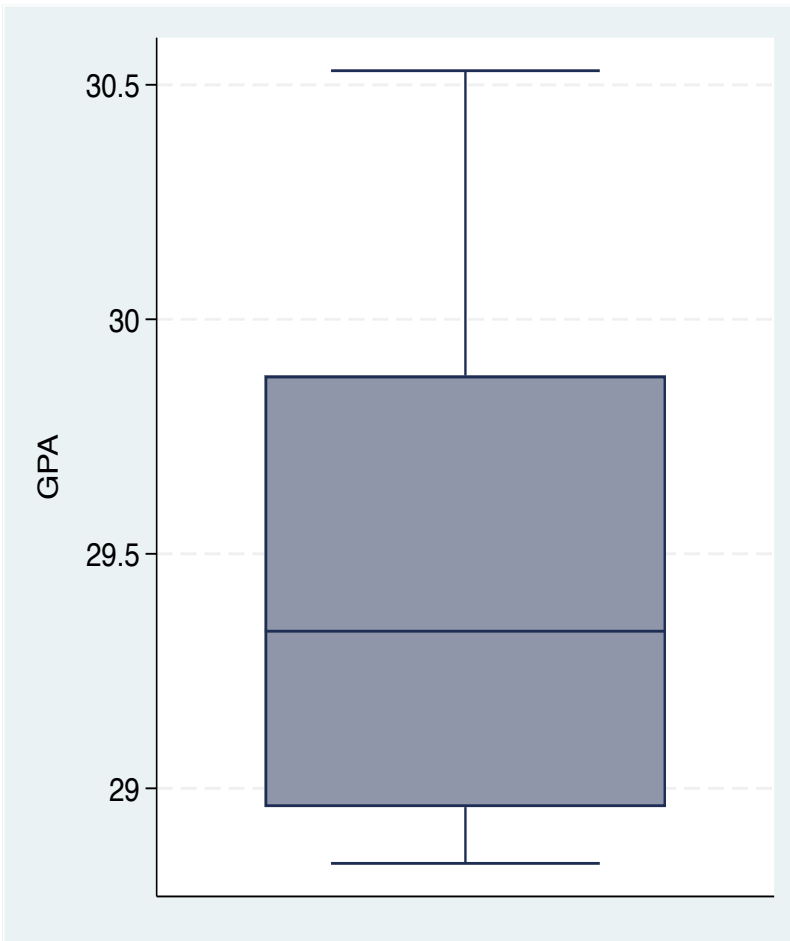
Internship (mandatory)



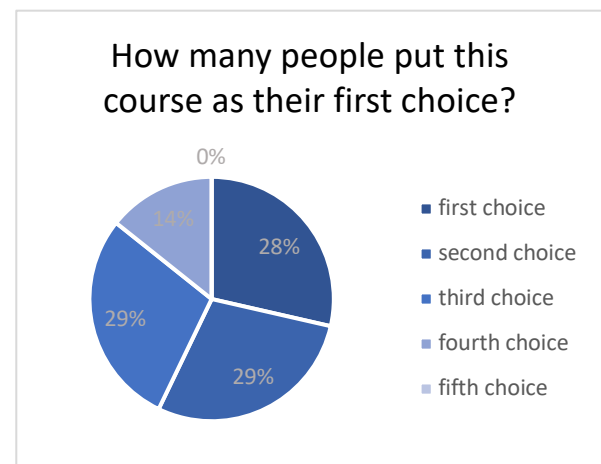
First round of application

Number of observations from our survey: 8

Box plot with the all the scores and last two scores that secured a place in the course:



GPA	CFU	Score
28,84	116	107,047
28,6	123	106,517



Maximum GPA which didn't get admitted in this course in 1 round: **28,11** with **119** CFU

Second round of application

Unfortunately, the data we collected is incomplete and could be misleading, with just **1** observation.

The lower GPA is **27,22** with **146** cfu



ECONOMICS AND MANAGEMENT OF GOVERNMENT AND INTERNATIONAL ORGANIZATIONS



First year (at Bocconi)	Second Year (at Bocconi and/or abroad)
<ul style="list-style-type: none"> Quantitative Methods Public Sector Strategy Making Legal Framework (National and International) Interplay Between Policy-Making and Politics Functioning Dynamics of Global Markets P.A. Techniques of Accounting Performance Management in P.A. and I.O. Policy Evaluation Business-Government Relations Management of I.O. and NGOs 	<ul style="list-style-type: none"> Major 4 electives Language courses (two languages) supplementary curricular activities thesis
Study plan and electives (link to the website)	

Majors

- **International Organizations** (major A)
- **Public Management and Business-Government Relations** (major B)
- **Sustainability** (major C)
- **Healthcare** (major D)

Exchange

Double degree

- **FGV-EAESP** Escola de Administração de Empresas de São Paulo da Fundação Getulio Vargas (São Paulo, Brazil)
- **Hertie** School of Governance (Berlin, Germany)
- **Sciences Po** - Institut d'Etudes Politiques de Paris (Paris, France)
- **SUNY** The State University of New York at Albany (Albany, US)

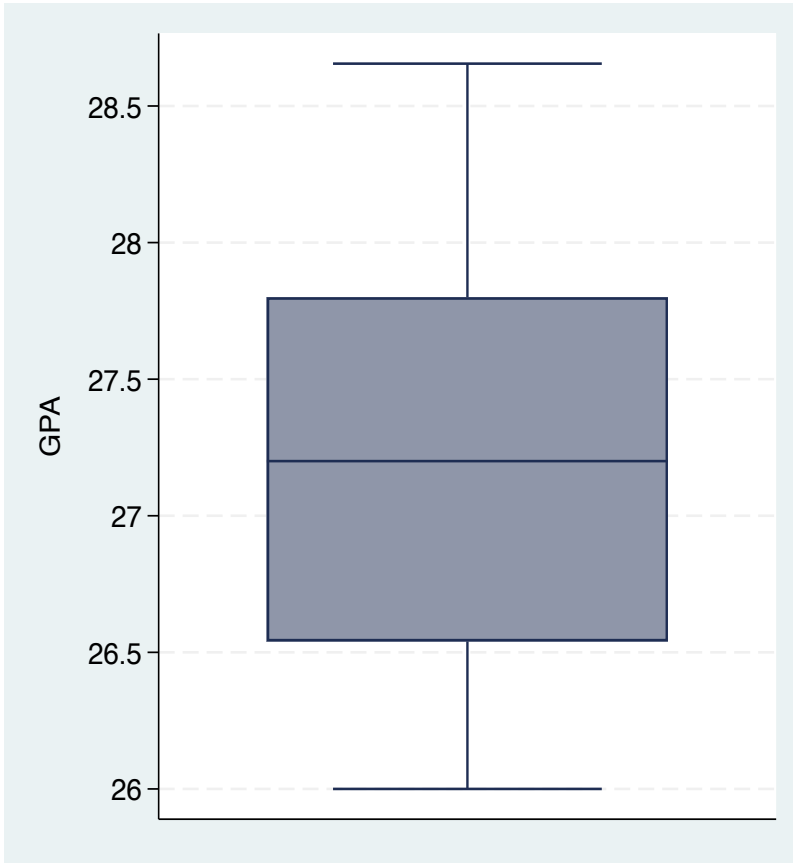
Internship (mandatory)



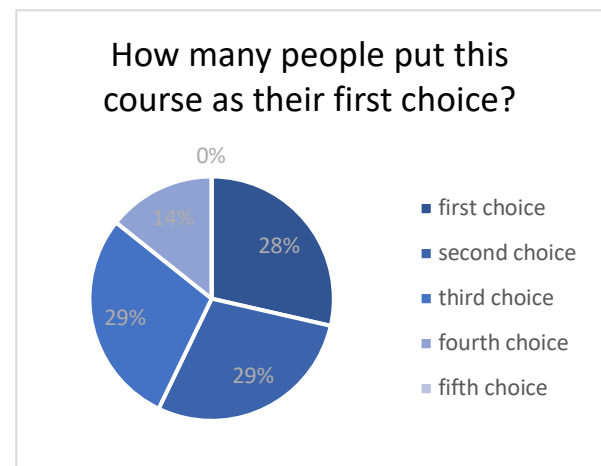
First round of application

Number of observations from our survey: 9

Box plot with the all the scores and last two scores that secured a place in the course:



GPA	CFU	Score
26,16	110	96,92
26	120	96,833



Maximum GPA which didn't get admitted in this course in 1 round: **26** with **99** CFU

Second round of application

GPA	CFU
25,19	137
25,14	132
25,07	132



POLITICS AND POLICY ANALYSIS



First year (at Bocconi)	Second Year (at Bocconi and/or abroad)
<ul style="list-style-type: none">• Quantitative Methods for Policy Analysis• Comparative Politics• Functioning of Public Sector• Public Economics• Legal Aspects of Policy Making• International Relations• Population Dynamics and Demography	<ul style="list-style-type: none">• 4 electives• Language courses (two languages)• supplementary curricular activities• thesis
Study plan and electives (link to the website)	

It is possible to apply for a double degree with [LSE](#) and [Sciences Po](#), but the programs follow different rules so click the link on the name of the university for more information.

Exchange

Double degree

- **FGV-EAESP** Escola de Administração de Empresas de São Paulo da Fundação Getulio Vargas (São Paulo, Brazil)
- Universität **Mannheim** (Mannheim, Germany)

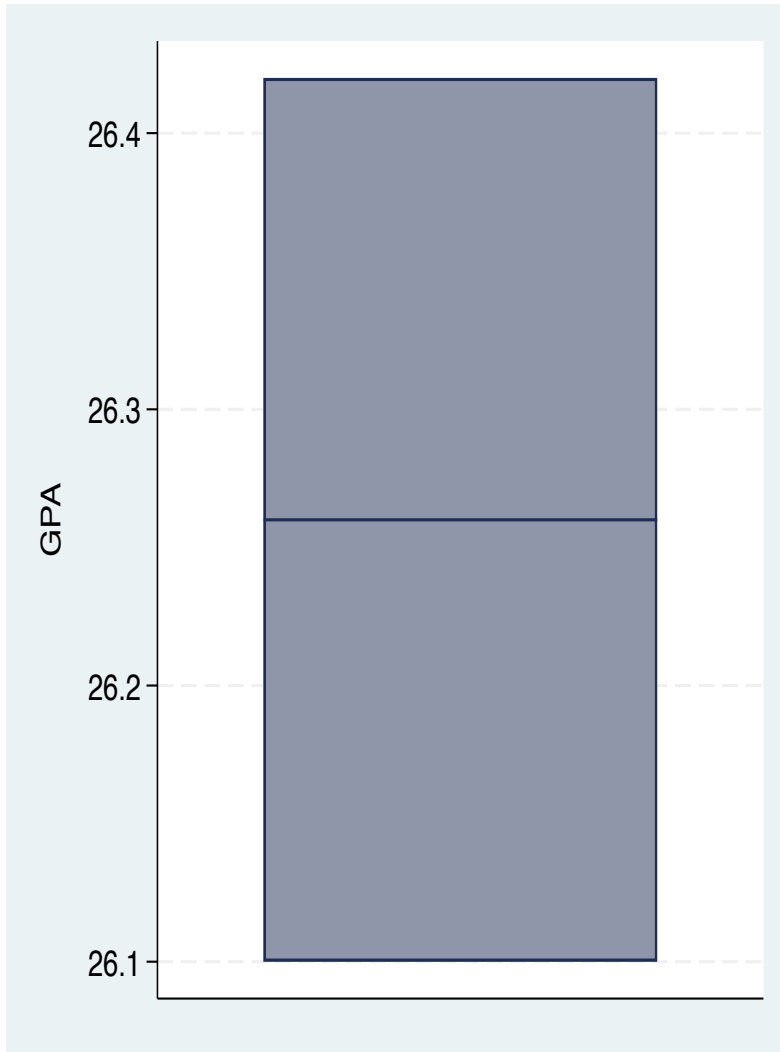
Internship (mandatory)



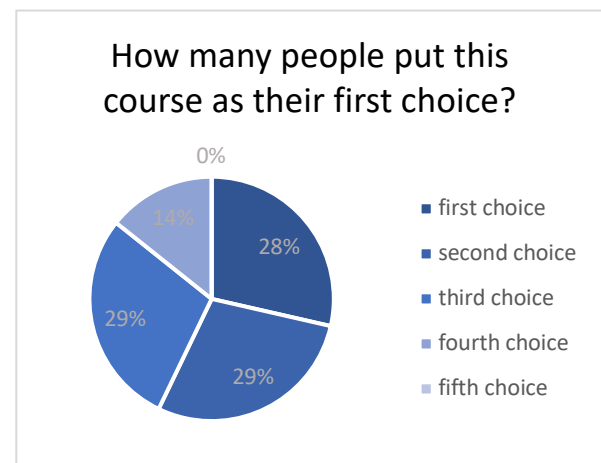
First round of application

Number of observations from our survey: 2

Box plot with the all the scores and last two scores that secured a place in the course:



GPA	CFU	Score
26,42	107	97,723
26,1	119	97,15



Maximum GPA which didn't get admitted in this course in 1 round: **no data available**

Second round of application

GPA	CFU
25,98	151
25,13	144



CHINA MIM

First year (Milan)	Second Year (Shanghai)
<ul style="list-style-type: none">• Corporate Finance• Corporate Strategy• Marketing Management• Performance Measurement• Business Law• Human Resources Management• Economics and Society• Business Analytics• Foreign languages (two languages):<ul style="list-style-type: none">◦ First language: English◦ Second language: Italian for students who are not Italian native speakers	<ul style="list-style-type: none">• 1 compulsory core course• 4 electives• Introduction to China• Primary Chinese Language• Business Extracurricular Activities• Thesis
general information about Fudan School of Management	

China MIM is a two-year, Double Degree MSc program in International Management delivered jointly by Bocconi University and the leading Chinese institution, Fudan School of Management.

The program targets third-year Bachelor students who will graduate:

- by **June 2024** if coming from **international universities**
- by **July 2024** if graduating at **Bocconi and Italian universities**

In addition to the elements of evaluation valid for all the MSc programs the Admission Committee needs to evaluate the intellectual potential, together with their international orientation and motivation.

For this reason, further specific elements of evaluation are required:

5. A specific and dedicated statement of motivation
6. A [special programs video interview](#) (compulsory)

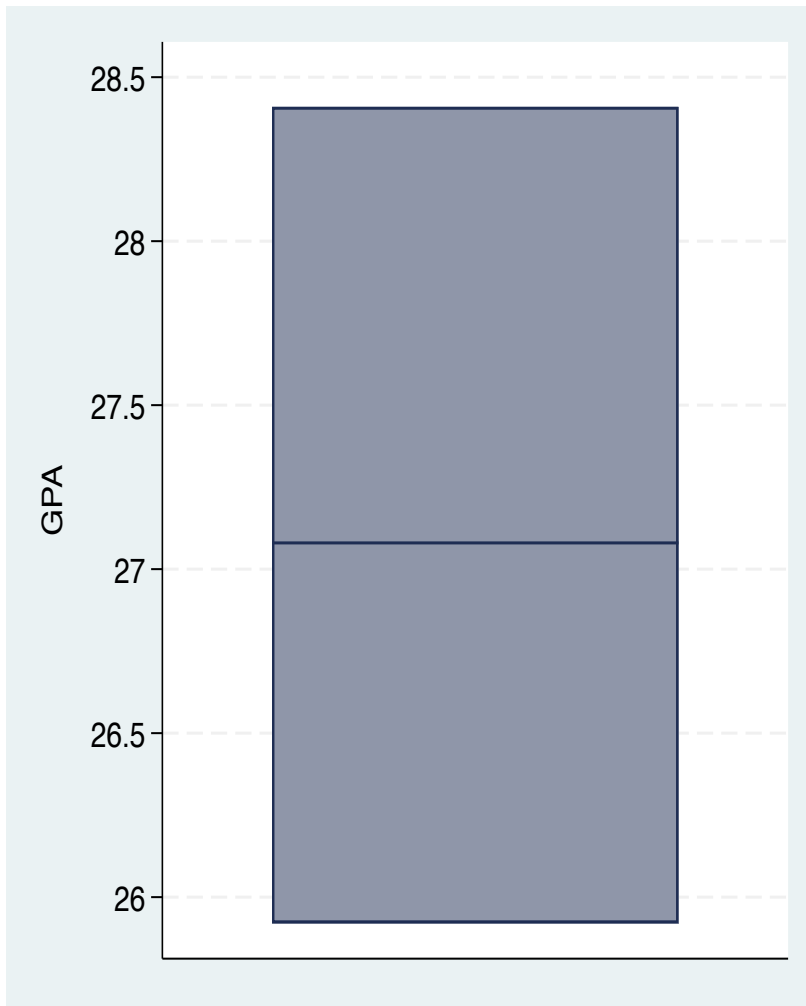
Internship (compulsory, there is a unique possibility to do it in China because studying in China for two semesters allows you to obtain an internship visa)



First round of application

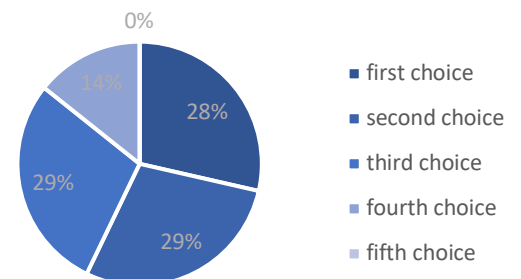
Number of observations from our survey: 3

Box plot with the all the scores and last two scores that secured a place in the course:



GPA	CFU	Score
27,08	125	101,043
25,92	114	96,24

How many people put this course as their first choice?



Maximum GPA which didn't get admitted in this course in 1 round: **no data available**

Second round of application

Unfortunately, the data we collected is incomplete and could be misleading, with just **1** observation.

The lower GPA is **25,13** with **144** cfu



TRANSFORMATIVE SUSTAINABILITY

First year (half at Bocconi half at Polimi)	Second Year (half at Bocconi half at Polimi)
<p>First semester- Bocconi</p> <ul style="list-style-type: none"> • Corporate Sustainability Strategies and Governance • Sustainable Finance and ESG Investing • Impact and Sustainability Measurement • Environmental Economics and Climate Change • seminars <p>Second semester - Polimi</p> <ul style="list-style-type: none"> • Materials Towards Circular Economy • Ecological Processes, Environmental Impacts and Transition Towards Sustainability • Technologies for the Energy Transition Towards Sustainability • Designing Sustainable Cities • seminars 	<ul style="list-style-type: none"> • Business and Marketing Plan Workshop • Sustainable Entrepreneurship Workshop • Data Analytics for Sustainability • Sustainable Operations & Supply Chain Management • Personalized path <ul style="list-style-type: none"> ◦ Diversity and Global Policy ◦ Technologies and Systems for Sustainable Mobility • Electives • Language courses (one eu language) • Thesis
<p>Study plan and electives list (link to the website)</p>	

Applications will be administered by a joint admissions board of representatives from both Bocconi University and Politecnico di Milano. The decision will be based both on **quantitative** (test score/GPA) and **qualitative** (CV, motivational letter) criteria that may be different according to the category of applicant.

Click [this link](#) to have more information on the application procedure.

There are no international programs for this degree.

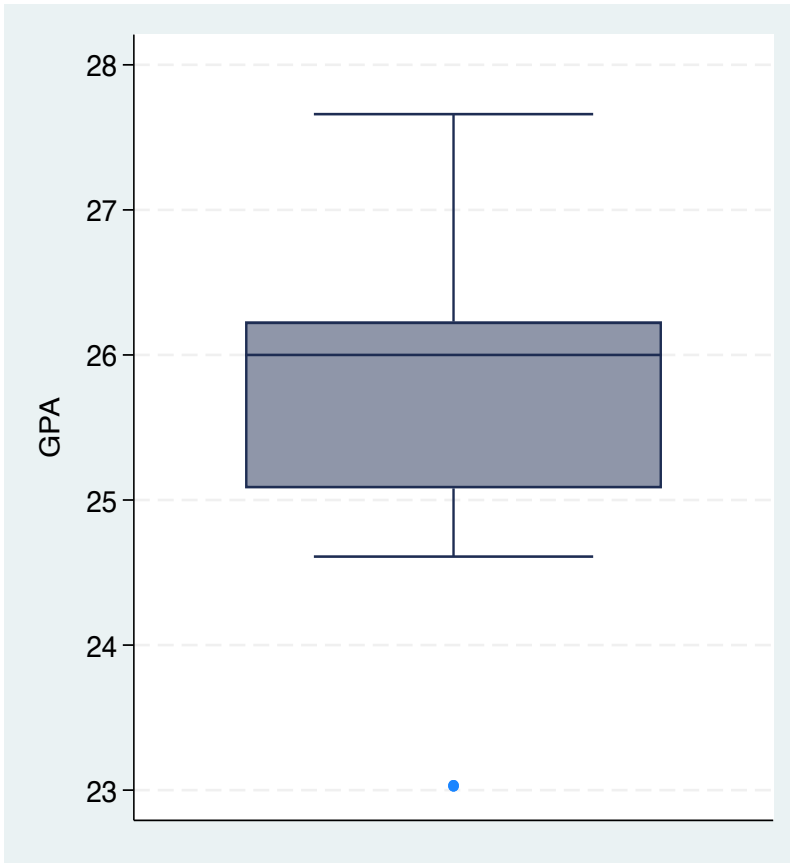
Internship (mandatory)



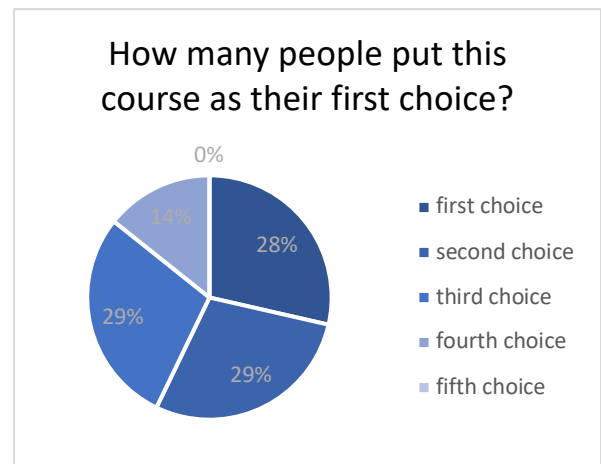
First round of application

Number of observations from our survey: 9

Box plot with the all the scores and last two scores that secured a place in the course:



GPA	CFU	Score
24,61	92	90,337
23,03	120	85,943



Maximum GPA which didn't get admitted in this course in 1 round: **no data available**

Second round of application

GPA	CFU
25,20	148
24,64	145
24,52	145

